



# **NATIONAL MUSEUM OF NATURAL HISTORY**

**Ministry of Environment, Forest and Climate Change**

**New Delhi-110003**

**15.07.2016**

# **NATIONAL MUSEUM OF NATURAL HISTORY**

(MINISTRY OF ENVIRONMENT, FOREST AND CLIMATE CHANGE)



**Dr. AMITA PRASAD, ADDITIONAL SECRETARY, MoEFCC**

9810997501



**Dr. R. DALWANI, ADVISER, MoEFCC**

9810402450



**Dr. B. VENUGOPAL, DIRECTOR, NMNH**

9871568309



**Ms NAAZ. RIZVI, SCIENTIST E, NMNH**

9868244086



## SCOPE OF OPERATION

**INSTITUTIONAL STATUS:** Subordinate office of MoEFCC

**SCHEME:** Name of Scheme and Sub-scheme

Earlier Scheme: EE, Sub-scheme **NMNH**  
Later 1 Scheme: EE, Sub-schemes: **NMNH HQ** and **RMNH**  
Later 2: Scheme EIEA, Sub-schemes: **NMNH HQ** and **RMNH**  
Presently: Scheme Survey and Research, Sub-scheme **NMNH**

**MILESTONE**

1972	NMNH Established:	New Delhi
1978	NMNH (opened to public):	Headquarter, New Delhi
1995	NMNH Southern Region:	RMNH Mysore
1997	NMNH Central Region:	RMNH Bhopal
2004	NMNH Eastern Region:	RMNH Bhubaneswar
2014	NMNH Western Region:	RMNH Sawai Madhopur
	NMNH North Eastern Region:	RMNH Gangtok (under construction)

**THEMATIC AREA:** Natural History: Biodiversity  
**FUNCTIONAL AREA:** Environmental Communication/ Education



New Delhi 05-06-1978



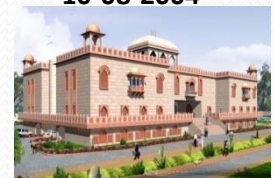
Mysore 20-05-1995



Bhopal 29-09-1997



Bhubaneswar  
10-08-2004



Sawai Madhopur  
01.03.2014

## OBJECTIVES

- To establish the NMNH as an internationally reputed Museum in the capital
- To establish Museums of Natural History in various regions of the country and on different focus themes
- To undertake curatorial works on (tangible and intangible aspects) Museum collections
- To undertake curatorial works on Museum communication for the benefit of visitors
- To undertake educational programmes on natural heritage awareness aimed at a socially included society



# BASELINE SCENARIO

INFRASTRUCTURE	PERSONNEL
<b>Museum Campus</b> <b>Museum Building</b> <ul style="list-style-type: none"> <li>• Galleries</li> <li>• Exhibitions</li> <li>• Film Projection Hall</li> <li>• Auditorium</li> <li>• Discovery Centre</li> <li>• Library</li> </ul>	<ul style="list-style-type: none"> <li>• Scientific</li> <li>• Educational</li> <li>• Technical</li> <li>• Administrative</li> </ul>

INCUMBENCY POSITION (HQ+RMNH)						
Group	Delhi	Mysore	Bhopal	BHUB	SM	Total
A	6	2	2	2	3	15
B	5	3	0	1	2	11
C	23	15	13	8	9	68
Total	34*	20	15	11	14	94

SANCTIONED STRENGTH OF STAFF				
Group	Sanctioned	Filled	Vacant	Remarks
A	18	15	03	2 Posts of Scientist C - advertised by MoEFCC. 1 post of Scientist B – Appointing procedure completed.
B	23	11	12	Requisitions sent to SSC. RRs are being amended.
C	85	68	17	Requisitions sent to SSC. RRs are being amended. Promotions being processed
Total	126	94	32	

\* Posted at Ministry 09  
 Posted at NMNH 23  
 Deputation 02

# FINANCIAL OUTLAYS

	Amount in Rs CRORES					
	Outlay.....			Expenditure.....		
	Total	Capital	Revenue	Total	Capital	Revenue
2012-13	17.20	09.00	08.20	14.48	07.00	07.78
2013-14	12.61	04.50	08.11	12.45	04.52	07.93
2014-15	11.94	05.75	06.19	11.49	05.46	06.03
2015-16	15.90	04.20	11.70	14.15	02.63	11.52
2016-17	20.00	07.00	13.00			
<b>TOTAL 2012-2017</b>	<b>77.65</b>	<b>30.45</b>	<b>47.20</b>			

		<b>FINANCIAL PROJECTIONS</b>	2017-18	2018-19	2019-20	TOTAL
A	<b>CAPITAL</b>		50.00	55.00	60.00	165.00
1	Continuing works					
	NMNH HQ: New Delhi					
	RMNH Mysore, Bhopal, Bhubaneswar, S Madhopur					
	RMNH Gangtok					
2	New works					
	Outdoor exhibits					
	Galleries in RMNH (Capital component)					
B	<b>REVENUE</b>		25.00	30.00	35.00	090.00
1	Continuing works		15.00	18.00	20.00	
2	New works		10.00	12.00	15.00	
	Collection: of specimens for the new HQ					
	Collection: Digitisation of specimens in existing Museums					
	Training: International professional programmes					
	Education: YEYA programmes involving all States					
	Social inclusion (for children with disabilities)					
	Out-reach for community: Intangible Heritage Festivals					
C	<b>TOTAL (Capital + Revenue)</b>		75.00	85.00	95.00	255.00



# ...OUTPUTS

## EXHIBITION:

- **Permanent Exhibitions (Galleries):** thematic collection displays
- **Temporary Exhibitions:** contemporary themes
- **Travelling Exhibitions:** travel to various places

## EDUCATION:

- **Informal Educational institution.** Cater to the EE awareness requirements of people
- **Formal Education:** Supplement school curriculum on Environment and Biology.
- **Programmes/ Competitions on Environment**
- **Nature Camp, summer vacation programme, field visits**
- **Organising workshop, seminars, conferences**
- **Publication:** Popular

## OUT-REACH:

- **NMNH in New Delhi reaches out to larger geographical areas through RMNH**
- **Mobile Exhibitions to reach out to Rural areas**
- **Community reach-out through Intangible Heritage Festivals.**

## SOCIAL INCLUSION:

- **The NMNH takes special care to make its resources socially inclusive.**
- **Target: children with disabilities and those belonging to socially excluded communities**
- **Programmes arranged both within and outside the Museums**





# MAIN EVENTS AT NMNH



## January

- ♦ World Braille Day (4th Jan)

## February

- ♦ World Wetland Day (2nd Feb.)
- \* National Science Day (28th Feb.)  
Programme for Disabled

## March

- ♦ World Forestry Day (21st March)
- ♦ World Day for Water (22nd March)

## April

- ♦ World Heritage Day (18th April)
- o Earth Day (22nd April)

## May

- o International Museum Day (18th May)
- ♦ International Day for Biological Diversity (22nd May)
- World No Tobacco Day (31st May)  
Summer Programme

## June

- o World Environment Day (5th June)
- \* World Day to Combat Desertification (17th June)

## July

- \* Van Mahotsav (1st-7th July)
- ♦ World Population Day (11th July)

## August

Orientation Workshop for Teachers

## September

- ✱ International Ozone Day (16th Sep.)

## October

- o Wildlife Week (2nd Oct. - 8th Oct.)
- \* World Habitat Day (5th Oct.)

## November

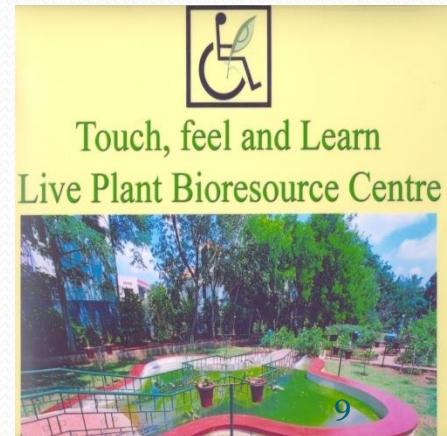
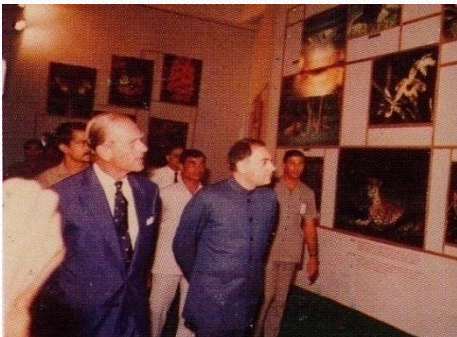
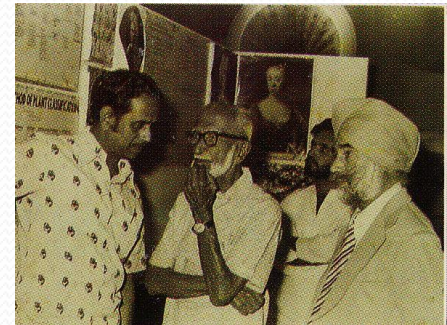
- ♦ National Education Day (11th Nov.)
- o National Environment Awareness Campaign (19th Nov. - 19 Dec.)
- ♦ National Heritage Week (19th Nov.-25th Nov.)
- \* Conservation Day (25th Nov.)

## December

- National Pollution Control Day (2nd Dec.)
- \* International Day for Disabled (3rd Dec.)
- o National Energy Conservation Day (14 Dec.)



# ...OUTPUTS: National



# Annual Action Plan 2016-17

	Quarter 1	Q2	Q3	Q4	Total No.
<b>COLLECTION</b> Fossils/ Whales skeleton	1	1	1	1	04
<b>EDUCATION</b>					
YEYA (Young Environmentalist of the Year Award)	5				05
Summer Vacation Programmes (SVP)	5				05
Nature Camps			5		05
Envt. Related Days: Programmes/ Competitions	5	10	10	5	30
<b>EXHIBITION</b>					
Temporary Exhibitions		1		1	02
Outreach: Exhibition (Travelling)			1		01
Permanent Exhibitions (=Galleries): New				1	01
<b>THRUST AREAS</b>					
Social Inclusion: Programmes with Children with Disabilities				5	05
Social Inclusion: National Workshops			3		03
Intangible Heritage (including CC)		1			01
Intangible Heritage Festival			1		01
<b>TRAINING PROGRAMMES</b>					
Museologists			1	1	02
Teachers		4		1	05
<b>INTERNATIONAL PROGRAMMES</b>					
‘Nature and the Raj’: Exhibition+ Conf with BL, Sussex Univ			1		01
Study visit selected UK Museums for exposure to Modern trends in Museum management		1			01
Total Number					72
<b>CAPITAL WORKS</b>					
Setting up NMNH HQ					
Setting up RMNH Gangtok					



## MAJOR PROGRAMMES 2016

	<b>Programme</b>	<b>Month</b>	<b>Venue</b>
1	Exhibition on IH and CC	August 10	Bhubaneswar
2	Exhibition on IH of C. India	September 29	Bhopal
3	International Exhibition on “Nature and the Raj”	October 1 <sup>st</sup> week	Mysore
4	Intangible Heritage Festival 2016	October 4 <sup>th</sup> Week	S. Madhopur
5	Programme on Dr. E. K. Janaki Ammal	Nov 4	Thalasseri
6	Exhibition on “Gone, Going, Going...” (salvaged specimens)	December	S. Madhopur



## NMNH VISION

### 1 ADMINISTRATIVE : Institutional Establishment of NMNH

- National: Establishment of an internationally rated Museum HQ for NMNH
- Thematic: Establish Thematic Museums: Intangible Natural Heritage (TK about Biodiversity), Deserts, Western Ghats, Ganges etc
- MoEFCC to declare NMNH as the nodal agency for all Museum works

### 2 CONTENT: Natural History/ Heritage: Biodiversity

- Strengthen the organizational structure of all aspects of NH Curatorship
- Collaboration with international NH/ Biodiversity Museums of repute
- Increase the volume of collection in Botany and Zoology

### 3 FUNCTION: Environmental Communication to Public

- Inspire more than 5 crore visitors/ beneficiaries (within 10 years)
- 10 mega/ special exhibitions
- Intangible Heritage Festivals (IHF) with community collaboration

### 4 OPERATIONAL STRUCTURE: Sustainable

- Autonomous institution (National Council of Biodiversity Museums)
- Corpus funding strategy for sustainable operation
- Revenue generation for sustainable operation





Thanks

