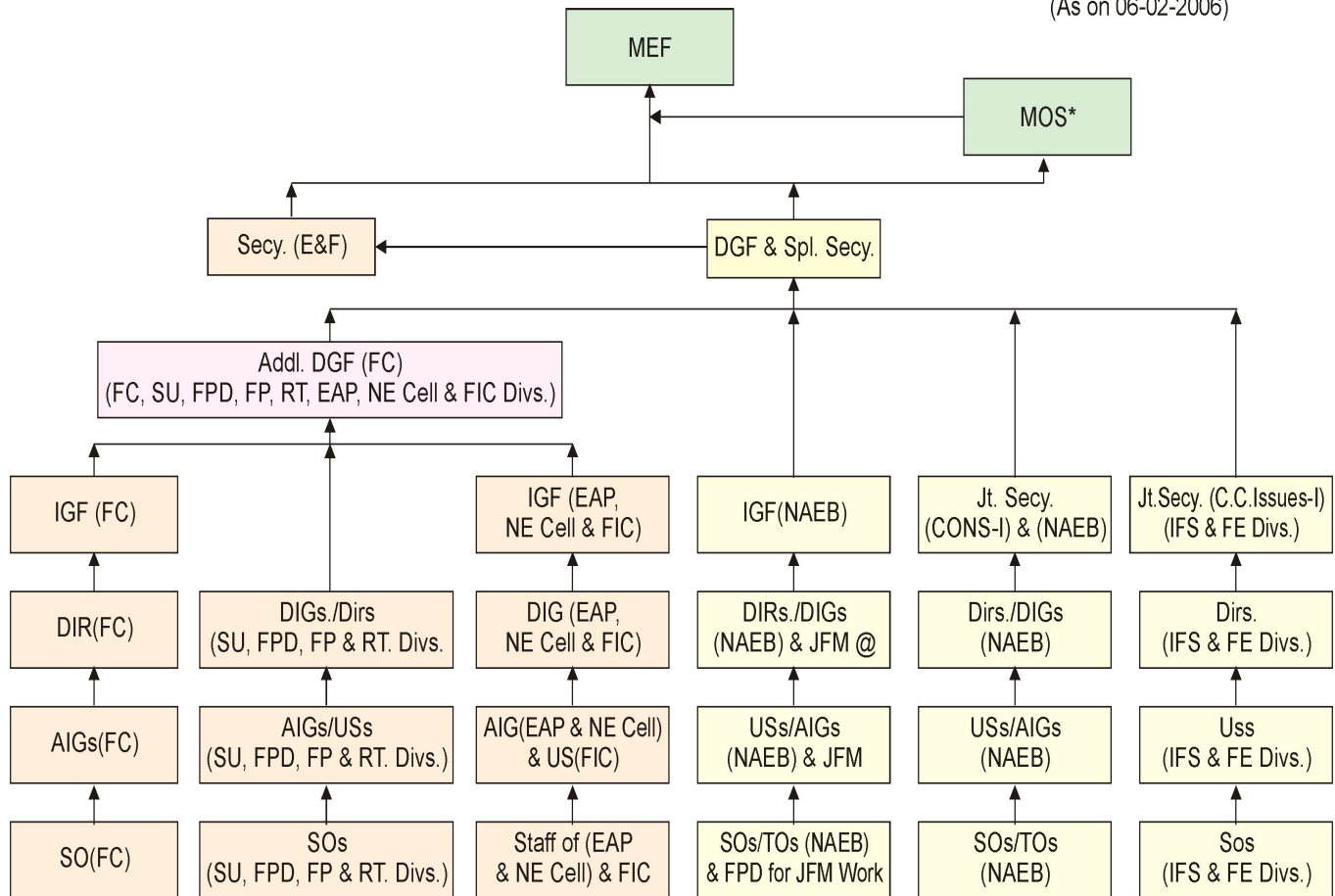


Channel of submission in the Forestry Sector of the MOE&F

Channel of submission in the Forestry Sector of the MoE&F

(As on 06-02-2006)



Note: *Allocation of subjects to MOS as per Office order issued by the Ministry
 @ DIG(FPD) will handle the work of JFM and submit the same through IGF (NAEB).
 The work relating to JFM and LULUCF under UNFCCC will also be handled by FPD.
 The work relating to service matters of SFS Officers and FROs and Staff will be handled by FE Div.
 The FP Div. will Co-ordinate/Compile information from various Divs. under Forestry and WL Sectors as and when required.