



# Ramsar Sites of India

## *Factsheets*



MoEFCC (2020). Ramsar Sites of India – Factsheets. Ministry of Environment, Forest and Climate Change, Government of India

**Published by**

Wetlands Division  
Ministry of Environment, Forest and Climate Change  
Government of India  
Indira Paryawaran Bhawan, Jor Bagh  
New Delhi – 110003

Phone: +91 11 24695456  
Email: manju.pandey@nic.in

**About this publication**

This document is a compilation of information on Ramsar Sites of India. The data presented in this document has been sourced from the Ramsar Information Sheets, Management Action Plans and other publications. The maps are for representation purpose only and not to scale.



मन्त्री  
पर्यावरण, वन एवं जलवायु परिवर्तन,  
सूचना एवं प्रसारण और  
भारी उद्योग एवं लोक उद्यम  
भारत सरकार



MINISTER  
ENVIRONMENT, FOREST & CLIMATE CHANGE,  
INFORMATION & BROADCASTING AND  
HEAVY INDUSTRIES & PUBLIC ENTERPRISES  
GOVERNMENT OF INDIA

प्रकाश जावडेकर  
*Prakash Javadekar*



#### MESSAGE

I am pleased to present the compilation of factsheets on the 'Ramsar Sites of India'. This compilation is intended to present information about the 37 Ramsar sites of the country in a concise and informative manner. I am happy to know that India has the maximum number of designated Ramsar sites in South Asia.

India is one of the few countries in the world to have a wetland inventory system wherein remote sensing techniques have been used to map the wetlands. A scientific approach to mapping and collecting data on the wetlands is essential to their preservation. The water storage and purification services of the wetlands also align with the Prime Minister's 'Nal se Jal' scheme under the 'Jal Hi Jivan Mission' which aims to provide adequate water supply to all households and to conserve water resources. With the rapidly deteriorating situation of water scarcity, it is imperative to preserve wetlands for posterity.

The compilation reflects the diversity of the Ramsar sites of the country, the values and ecosystem services being provided by them and also the threats being faced in their management. It is a step forward in streamlining the dispersed information on these wetlands and presenting them in an engaging format.

I congratulate the team of MoEF&CC that has put together this compilation. Let us commit ourselves to the continued preservation and sustainable management of not only the Ramsar sites but all the wetlands across the country.

Date: 13.02.2020

(Prakash Javadekar)

॥ प्लास्टिक नहीं, कपड़ा सही ॥







सी.के.मिश्रा  
C.K.Mishra



सत्यमेव जयते

सचिव  
भारत सरकार  
पर्यावरण, वन एवं जलवायु परिवर्तन मंत्रालय  
SECRETARY  
GOVERNMENT OF INDIA  
MINISTRY OF ENVIRONMENT, FOREST AND CLIMATE CHANGE



**FOREWORD**

Wetland ecosystems are vital for sustenance and growth of all life forms. These complex ecosystems offer a wide range of services including freshwater supply, food, fibre and raw materials besides playing a role in flood control, water quality improvement, groundwater recharge, recreation and climate change mitigation. These productive ecosystems are thus, of immense ecological, socio-economic as well as cultural importance.

Despite these benefits, wetlands are the first target of human interference, remain the most threatened of all natural resources and are disappearing three times faster than forests. Around 50% of the Earth's wetlands are estimated to already have disappeared through conversion to industrial, agricultural and residential purposes.

To conserve these valuable ecosystems, India became a party to the Ramsar Convention on Wetlands of International Importance in 1982 and has till now designated 37 Ramsar sites of international importance covering an area of 1067939 hectares which are being managed as per the Ramsar mandate.

We are happy to release this compilation of factsheets on the Ramsar sites of the country. The factsheets provide a glimpse of the values and benefits of each site and the threats to their existence and management.

I congratulate the Wetlands Division of the MoEF&CC who with their CEPA partners Wetlands International South Asia (WISA) and WWF-India along with GIZ have come out with this comprehensive document.

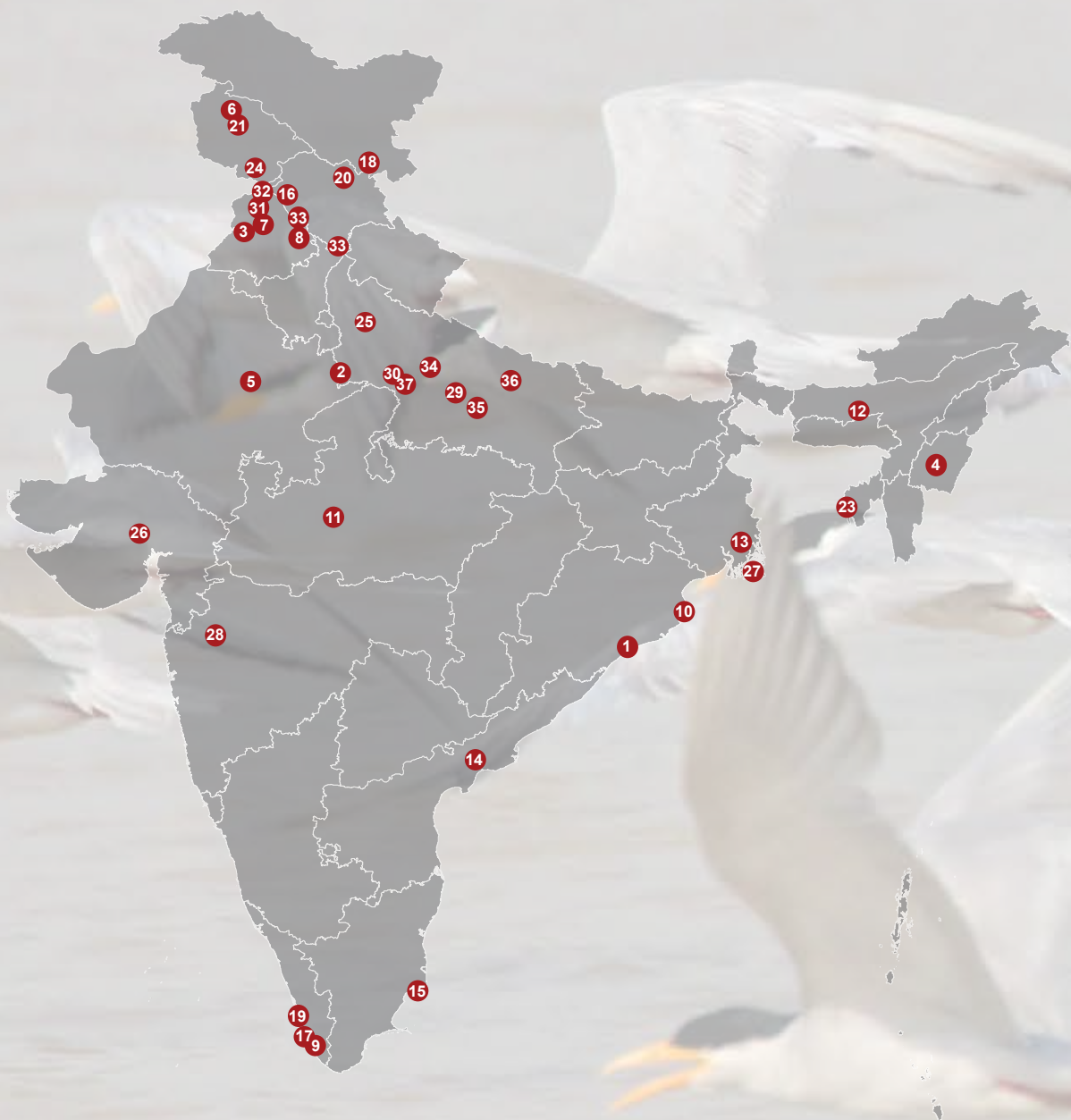
  
[C. K. Mishra]

New Delhi,  
13<sup>th</sup> February, 2020

# Contents

Sr. No. Page

	The Ramsar Sites Criteria	1
1	Chilika Lake	2
2	Keoladeo National Park	4
3	Harike Lake	6
4	Loktak Lake	8
5	Sambhar Lake	10
6	Wular Lake	12
7	Kanjli	14
8	Ropar	16
9	Ashtamudi Wetland	18
10	Bhitarkanika Mangroves	20
11	Bhoj Wetland	22
12	Deepor Beel	24
13	East Calcutta Wetlands	26
14	Kolleru Lake	28
15	Point Calimere Wildlife and Bird Sanctuary	30
16	Pong Dam Lake	32
17	Sasthamkotta Lake	34
18	Tsomoriri	36
19	Vembanad-Kol Wetland	38
20	Chandertal Wetland	40



Sr. No. Page

21	Hokera Wetland	42
22	Renuka Wetland	44
23	Rudrasagar Lake	46
24	Surinsar-Mansar Lakes	48
25	Upper Ganga River	50
26	Nalsarovar	52
27	Sundarban Wetland	54
28	Nandur Madhameshwar	56
29	Nawabganj Bird Sanctuary	58
30	Sarsai Nawar Jheel	60
31	Beas Conservation Reserve	62
32	Keshopur-Miani Community Reserve	64
33	Nangal Wildlife Sanctuary	66
34	Sandi Bird Sanctuary	68
35	Samaspur Bird Sanctuary	70
36	Parvati Arga Bird Sanctuary	72
37	Saman Bird Sanctuary	74



# The Ramsar Sites Criteria

## The nine criteria for identifying Wetlands of International Importance

### **Group A of the Criteria. Sites containing representative, rare or unique wetland types**

Criterion 1: A wetland should be considered internationally important if it contains a representative, rare, or unique example of a natural or near-natural wetland type found within the appropriate biogeographic region.

### **Group B of the Criteria. Sites of international importance for conserving biological diversity**

#### **Criteria based on species and ecological communities**

Criterion 2: A wetland should be considered internationally important if it supports vulnerable, endangered, or critically endangered species or threatened ecological communities.

Criterion 3: A wetland should be considered internationally important if it supports populations of plant and/or animal species important for maintaining the biological diversity of a particular biogeographic region.

Criterion 4: A wetland should be considered internationally important if it supports plant and/or animal species at a critical stage in their life cycles, or provides refuge during adverse conditions.

#### **Specific criteria based on waterbirds**

Criterion 5: A wetland should be considered internationally important if it regularly supports 20,000 or more waterbirds.

Criterion 6: A wetland should be considered internationally important if it regularly supports 1% of the individuals in a population of one species or subspecies of waterbird.

#### **Specific criteria based on fish**

Criterion 7: A wetland should be considered internationally important if it supports a significant proportion of indigenous fish subspecies, species or families, life-history stages, species interactions and/or populations that are representative of wetland benefits and/or values and thereby contributes to global biological diversity.

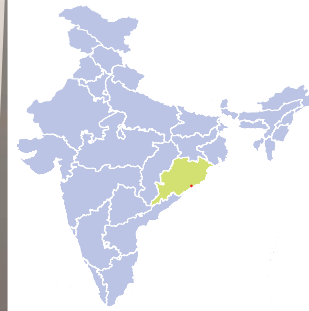
Criterion 8: A wetland should be considered internationally important if it is an important source of food for fishes, spawning ground, nursery and/or migration path on which fish stocks, either within the wetland or elsewhere, depend.

#### **Specific criteria based on other taxa**

Criterion 9: A wetland should be considered internationally important if it regularly supports 1% of the individuals in a population of one species or subspecies of wetland-dependent nonavian animal species.

# Chilika Lake

## Odisha



K.R. Chandrasekhar

### Date of Designation

October 1, 1981

### Location

Puri, Khurda and Ganjam Districts

### Area

1,16,500 hectares

### Designation Criteria

2

### Protection Status

15.5 km<sup>2</sup> island Nalabana designated as Bird Sanctuary

### Wetland Type

Natural lagoon

### Management Authority

Chilika Development Authority



## Values and Benefits

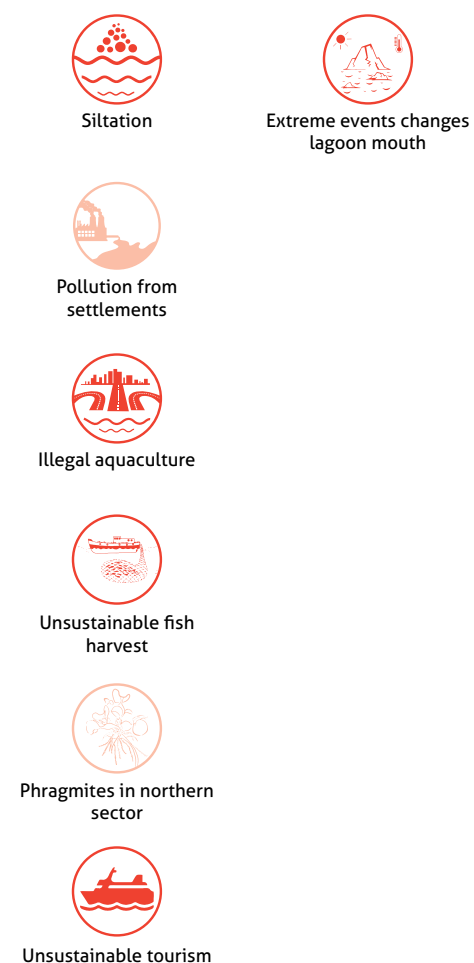
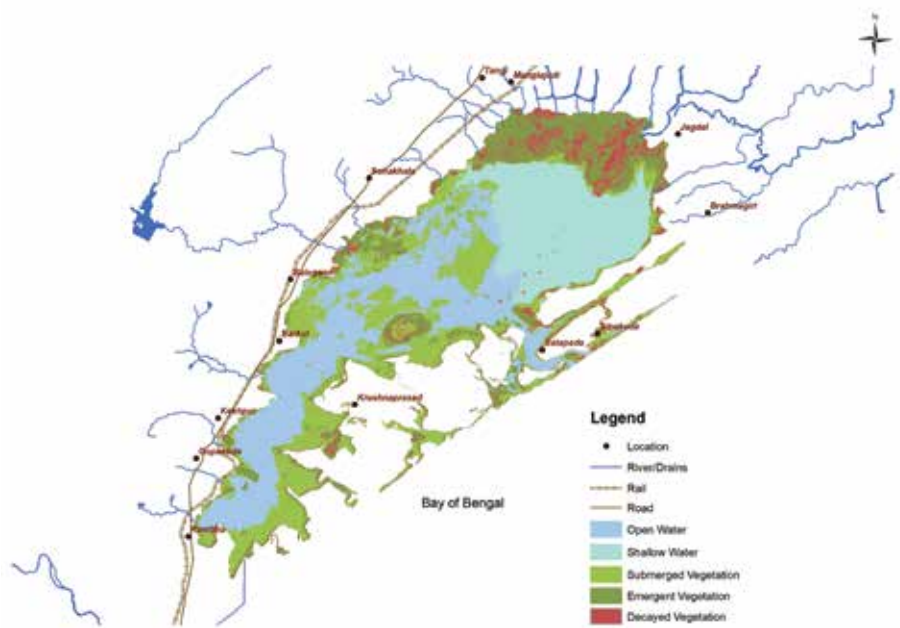
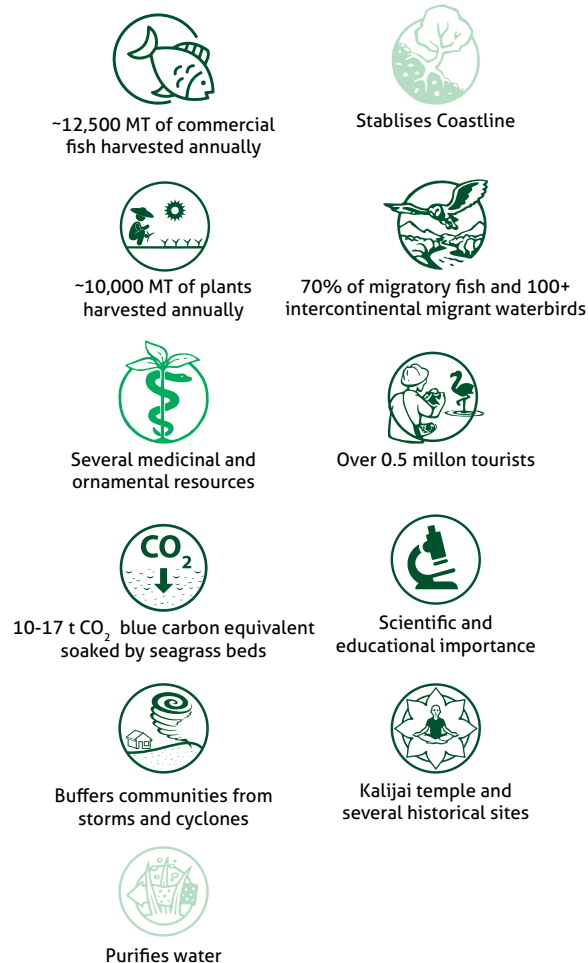
Significance

Low Medium High

Significance

Low Medium High

## Threats



## Species richness

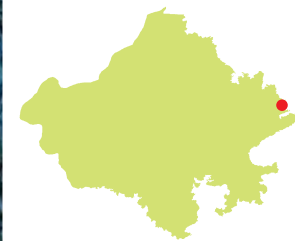
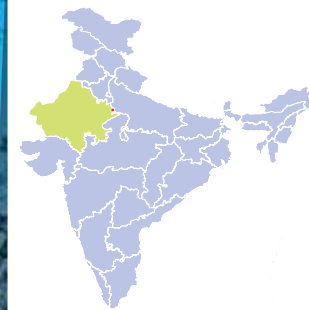
225 Birds  
300+ Fishes  
18 Mammals  
37 Reptiles & Amphibians  
900+ Plants

## Species of global conservation significance

Notable	Critically endangered	Endangered	Vulnerable
Irrawaddy Dolphin	Scalloped Hammerhead, Smalltooth Sawfish, Ganges Shark	Irrawaddy Dolphin, Winghead Shark, Longhead Eagle Ray	Lesser White-fronted Goose, Indian Skimmer, Woolly-necked Stork, Great Knot, Common Pochard, Toli Shad, <i>Otolithes ruber</i>

# Keoladeo National Park

## Rajasthan



Dhritiman Mukherjee

### Date of Designation

October 1, 1981

### Location

Bharatpur District

### Area

2,873 hectares

### Designation Criteria

2

### Protection Status

Keoladeo National Park

### Wetland Type

Freshwater marsh and swamp

### Other Designations

UNESCO World Heritage Site

### Management Authority

Rajasthan Forest Department



Values and Benefits



Groundwater recharge



Habitat for several migratory species



Tourism offers livelihood to local communities

Significance

Low Medium High

Significance

Low Medium High

Threats



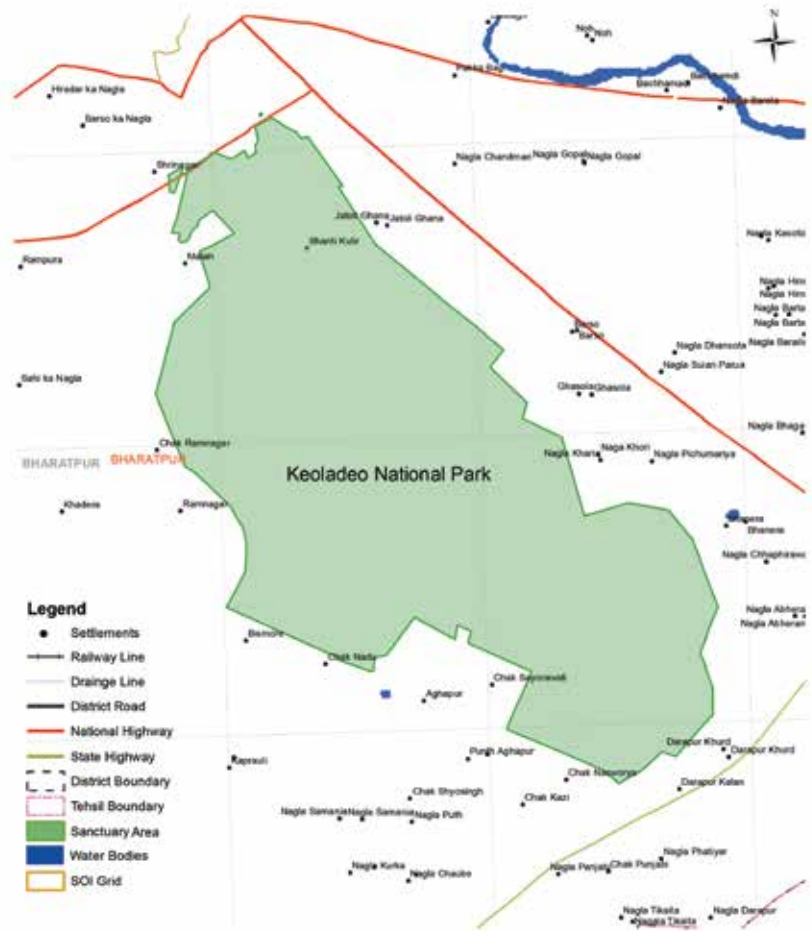
Hydrological regime alteration



Encroachment



Invasive species proliferation like Water hyacinth, Knot grass, Mesquite and African catfish



Species richness

375 Birds

57 Fishes

34 Mammals

32 Amphibians and Reptiles

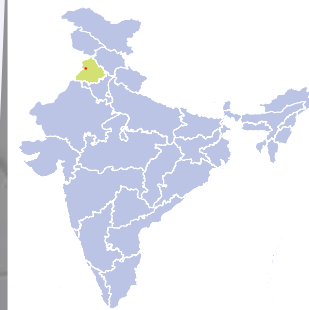
372 Plants

Species of global conservation significance

Notable	Critically endangered	Endangered	Vulnerable
Sarus Crane, Greater spotted Eagle, Painted Stork, Hog Deer		Greater Adjutant, Hog Deer	Common Pochard, Woolly-necked Stork, Sarus Crane, Lesser Adjutant, Greater spotted Eagle, Smooth-coated Otter, Sambar

# Harike Lake

## Punjab



Wetlands International South Asia Photo Library

### Date of Designation

March 23, 1990

### Location

Tarn Taran, Kapurthala and  
Ferozepur Districts

### Area

4100 hectares

### Designation Criteria

1

### Protection Status

Wildlife Sanctuary

### Wetland Type

Reservoir and water storage area

### Management Authority

Department of Forest and Wildlife  
Preservation, Punjab

## Values and Benefits



Water for irrigation to southern Punjab and Rajasthan



Buffers flood



Purifies wastewater



Traps sediment



Recharges groundwater



Habitat for several migratory species



Recreation and tourism



Scientific and educational values



Cultural and spiritual importance

Significance

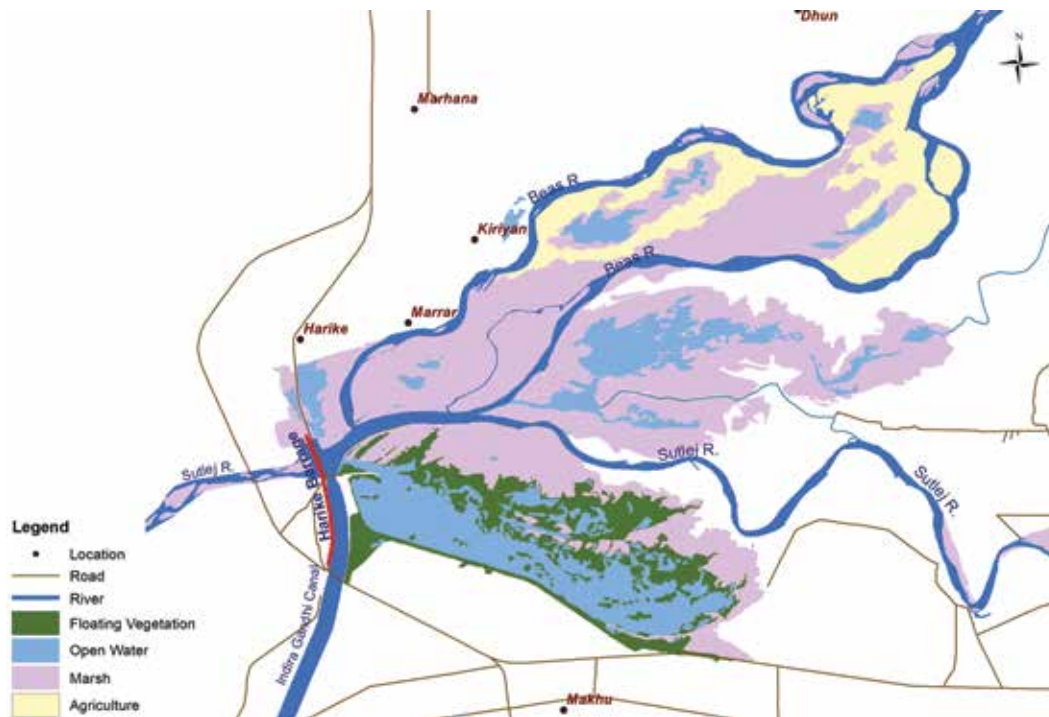
Low

Medium

High

Legend

- Location
- Road
- River
- Floating Vegetation
- Open Water
- Marsh
- Agriculture



Significance

Low

Medium

High

## Threats



Siltation



Pollution from upstream cities and towns



Encroachment



Illegal fishing



Water hyacinth proliferation

## Species richness

365 Birds

90 Fishes

13 Mammals

11 Reptiles

38 Plants

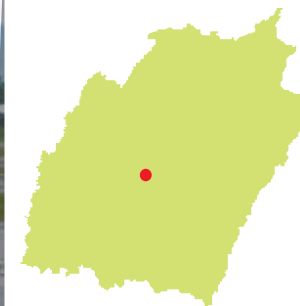
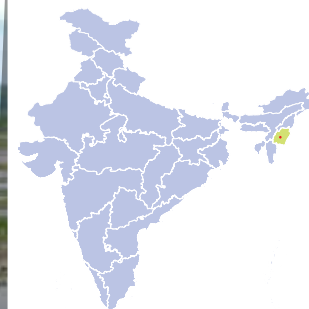
## Species of global conservation significance

Notable	Critically endangered	Endangered	Vulnerable
Indus River Dolphin, Smooth Coated Otter	Gharial, Red-crowned Roofed Turtle	Indus River Dolphin, Black-Bellied Tern, Egyptian Vulture, Indian Narrow-headed Softshell Turtle	Smooth-coated Otter, Jerdon's Babbler, Lesser White fronted Goose, Eastern Imperial Eagle, Common Pochard, European Carp, Batchwa Vacha, Spotted Snow Trout



# Loktak Lake

## Manipur



Wetlands International South Asia Photo Library

### Date of Designation

March 23, 1990

### Location

Bishnupur District

### Area

26,600 hectares

### Designation Criteria

1,2

### Wetland Type

Freshwater marsh

### Protection Status

40 km<sup>2</sup> in southern part designated as Keibul Lamjao National Park  
Wetland notified under Manipur Loktak Lake (Protection) Act, 2006

### Management Authority

Loktak Development Authority



## Values and Benefits

Significance

Low

Medium

High

Significance

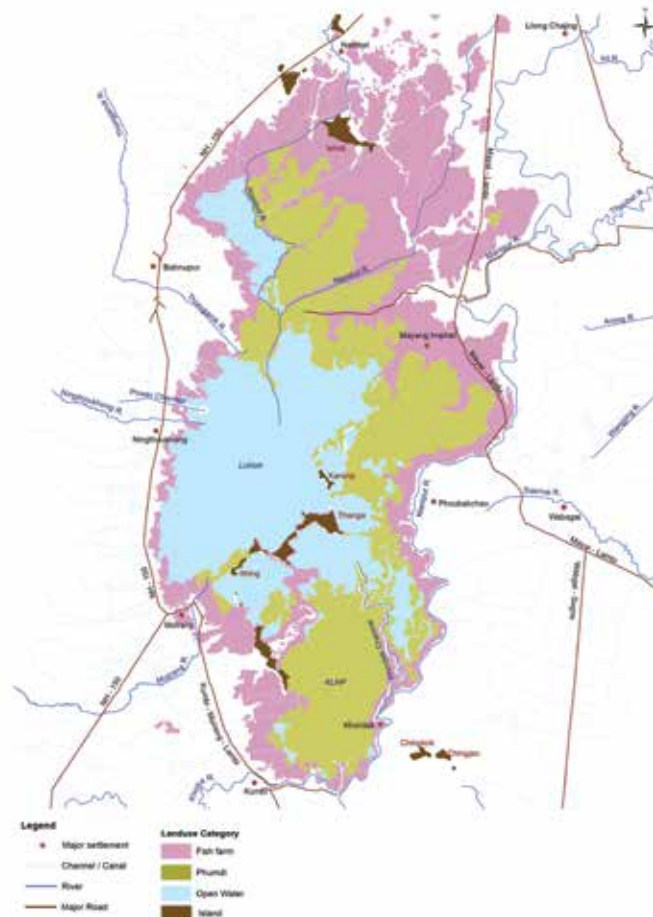
Low

Medium

High

## Threats

- Source of drinking water
- Purifies wastewater
- Water for 105 MW hydropower
- Groundwater recharge
- Livelihood for 5,000 fishers
- Lifecycle maintenance
- Medicinal & ornamental plants
- Tourism & recreation
- Carbon sink
- Scientific and educational importance
- Protection from floods
- Revered as Loktak Ima



- Water regime alteration by Ithai barrage
- Siltation
- Pollution
- Unsustainable water abstraction for hydropower
- Spread of Phumdi
- Fragmentation by roads

## Species richness

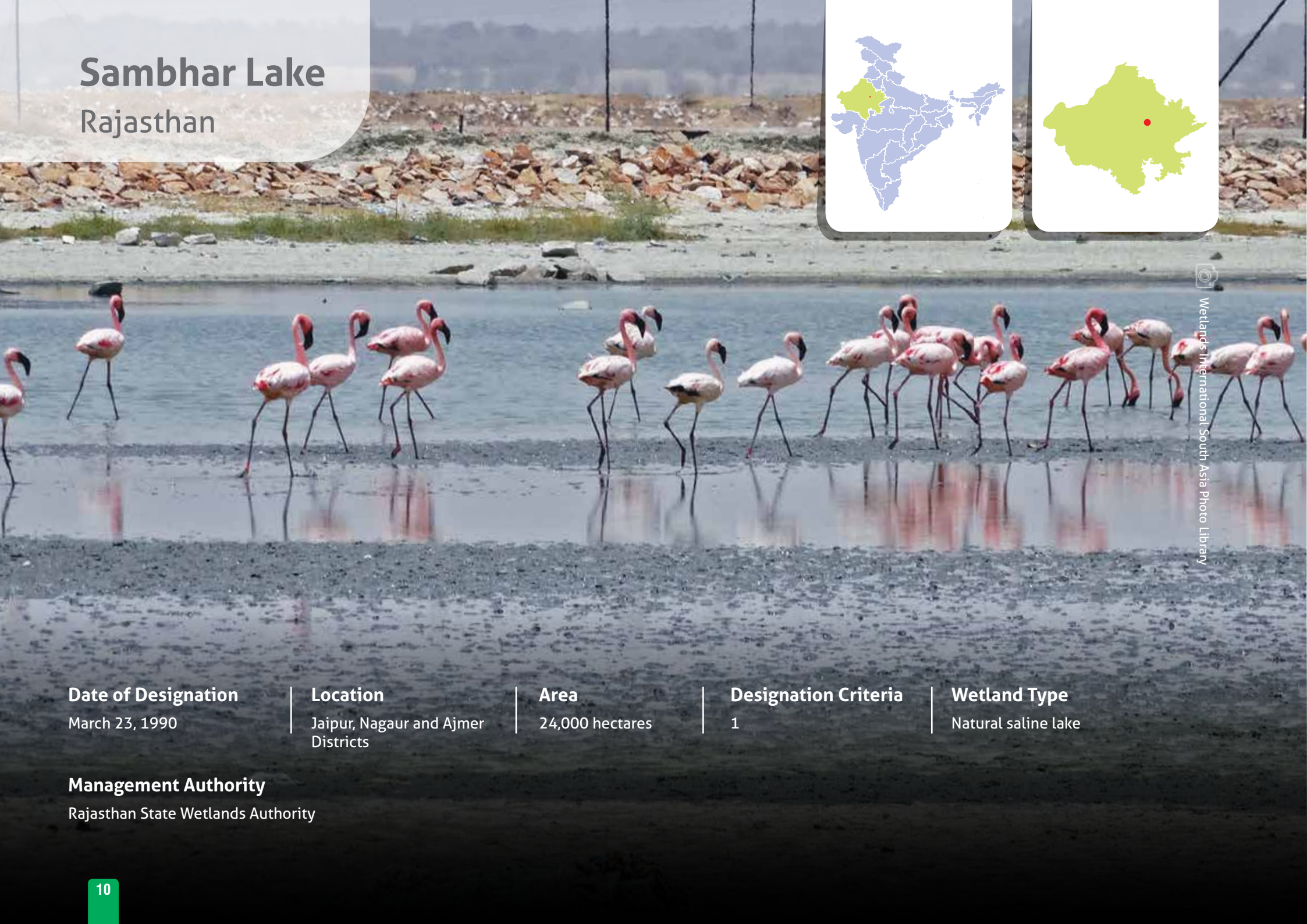
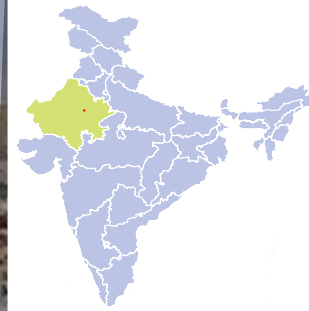
116 Birds  
54 Fishes  
22 Mammals  
68 Reptiles & Amphibians  
200+ Plants

## Species of global conservation significance

Notable	Critically endangered	Endangered	Vulnerable
Manipur Brow Antlered Deer or <i>Sangai</i>		Manipur Brow Antlered Deer, Hog Deer, Dhole, Red Jasper Barb, Keel Box Turtle	Lesser Adjutant, Sarus Crane, Common Pochard, Hooded Crane, Common Carp, Amboina Box Turtle, King Cobra, Burmese Python

# Sambhar Lake

## Rajasthan



Wetlands International South Asia Photo Library

### Date of Designation

March 23, 1990

### Location

Jaipur, Nagaur and Ajmer Districts

### Area

24,000 hectares

### Designation Criteria

1

### Wetland Type

Natural saline lake

### Management Authority

Rajasthan State Wetlands Authority



## Values and Benefits



~5% of country's salt production



Lifecycle of migratory waterbirds



Tourism destination



Scientific and Educational values



Ancient temple of Shakambari Devi

Significance

Low Medium High

Significance

Low Medium High

## Threats



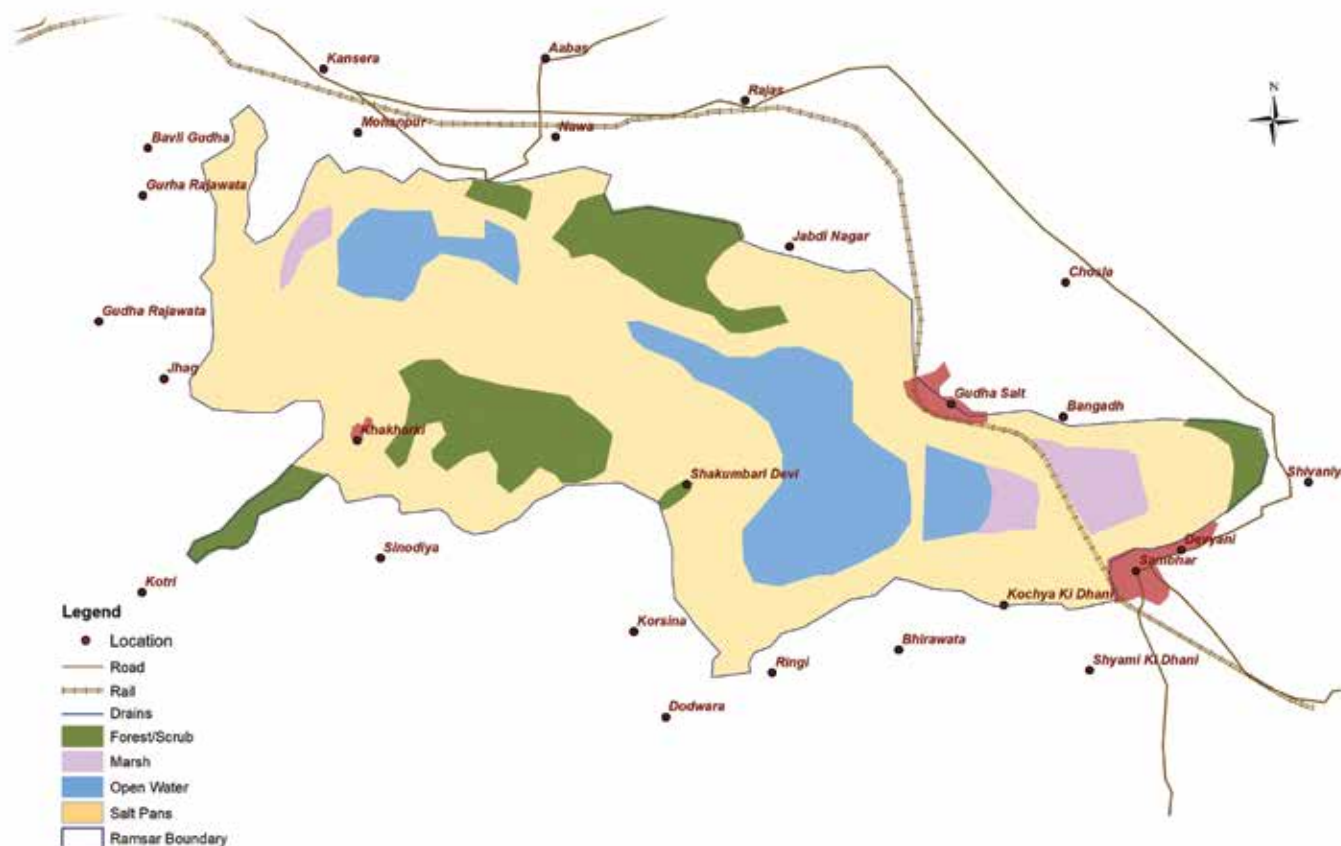
Hyper-salinity



Illegal salt mining



Regime fragmentation by roads and railways



## Species richness

71 Birds

6 Mammals

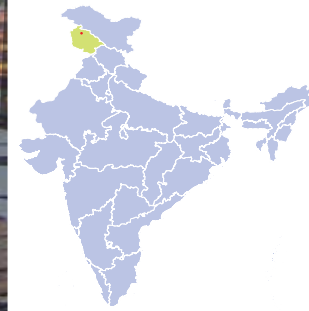
49 Plants

## Species of global conservation significance

Notable	Critically endangered	Endangered	Vulnerable
Lesser and Greater Flamingo, Demoiselle Crane		Egyptian Vulture	Common Pochard

# Wular Lake

## Jammu and Kashmir



Wetlands International South Asia Photo Library

### Date of Designation

March 23, 1990

### Location

Bandipora District

### Area

18900 hectares

### Designation Criteria

1

### Wetland Type

Freshwater lake and marsh

### Management Authority

Wular Conservation and  
Management Authority



## Values and Benefits



~1500 MT fish catch annually



Important source of vegetables for 30+ villages



Fodder



Buffers floods



Groundwater recharge



Tourism and recreation



Spiritual and historical significance

Significance

Low

Medium

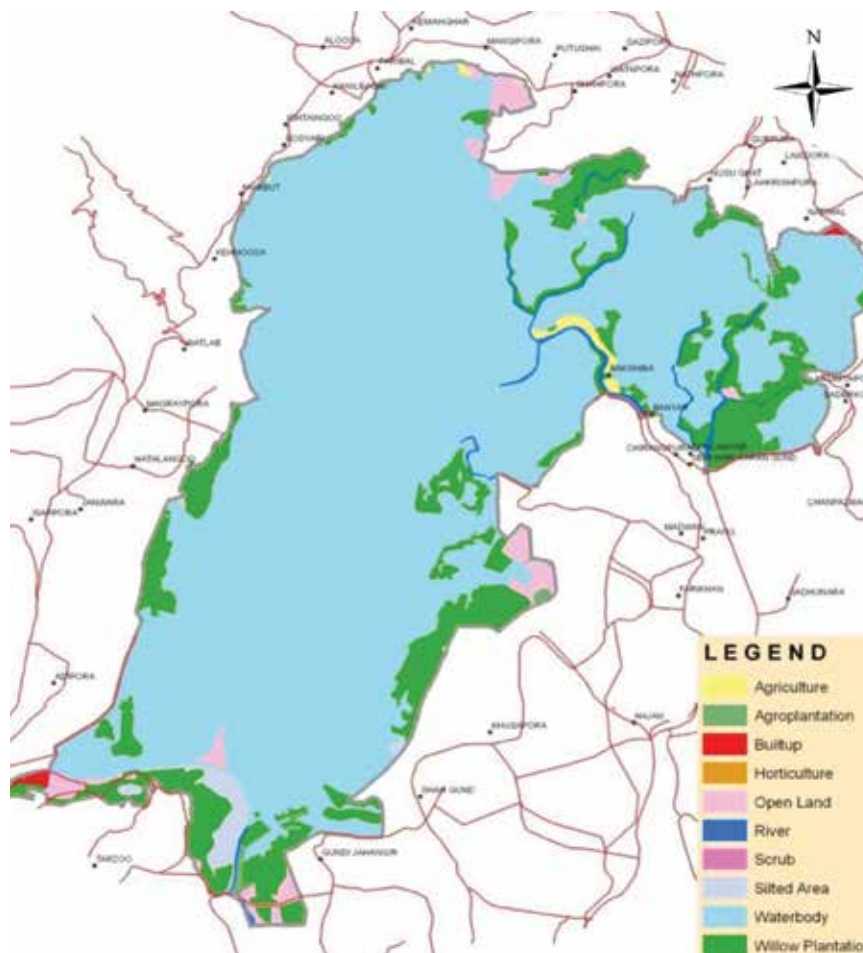
High

Significance

Low

Medium

High



## Threats



Construction of embankments



Siltation



Pollution



Encroachment (Willow plantation)

## Species richness

56 Birds

39 Fishes

20+ Plants

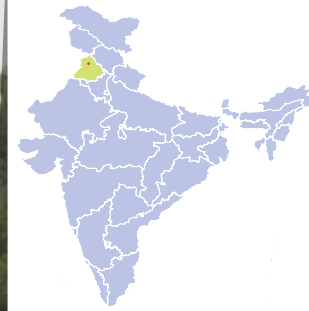
## Species of global conservation significance

Notable	Critically endangered	Endangered	Vulnerable
	White-bellied Heron, Pink-headed Duck, Baer's Pochard, Kashmir Catfish	Oriental Stork, White-headed Duck, White-winged Duck, Black-bellied Tern	Black-necked Crane, Indian Skimmer, Marbled Teal, Asla, Common Carp



# Kanjli

Punjab



Wetlands International South Asia Photo Library

## Date of Designation

January, 22, 2002

## Location

Kapurthala District

## Area

183 hectares

## Designation Criteria

3

## Protection Status

Conservation Reserve

## Wetland Type

River stretch

## Management Authority

Department of Forest and Wildlife  
Preservation, Punjab

## Values and Benefits



Provides water for irrigation



Recreation and tourism



Buffers floods



Scientific and educational values



Purifies wastewater



Holy river associated with Guru Nanak Dev ji



Traps sediment



Recharges groundwater



Habitat for several migratory species

Significance

Low

Medium

High

Significance

Low

Medium

High

## Threats



Hydrological regime alteration



Siltation



Pollution from upstream cities and towns



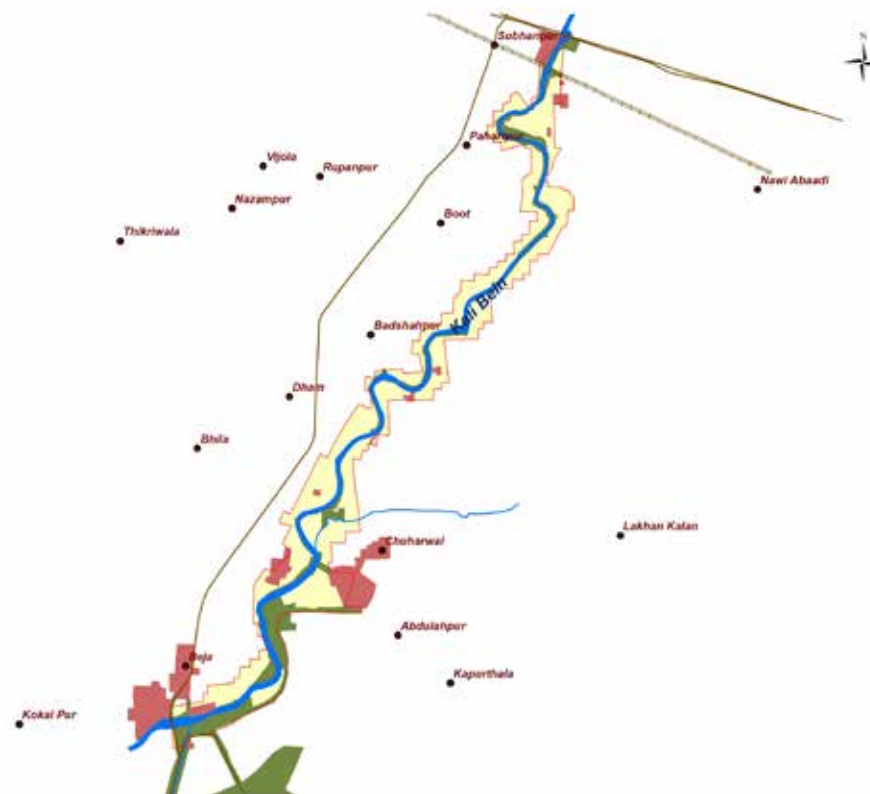
Encroachment



Water hyacinth proliferation

### Legend

- Location
- Road
- Rail
- Drains
- River
- Forest/Scrub
- Settlement/Builtup
- Ramsar Boundary



## Species richness

97 Birds

11 Fishes

4 Mammals

35 taxa of Invertebrates

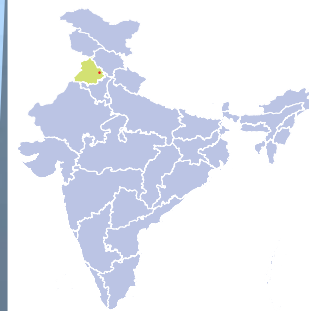
## Species of global conservation significance

Notable	Critically endangered	Endangered	Vulnerable
<i>Utricularia sp.</i>			Common Pochard, Woolly-necked Stork, Common Carp, Wallagu Catfish



# Ropar Lake

## Punjab



Wetlands International South Asia Photo Library

### Date of Designation

January 22, 2002

### Location

Rupnagar and Nawanshahr  
Districts

### Area

1365 hectares

### Designation Criteria

2,3

### Protection Status

Conservation Reserve

### Wetland Type

Barrage / Water storage area

### Management Authority

Department of Forest and Wildlife  
Preservation, Punjab

## Values and Benefits



Source of drinking water,  
irrigation for lower Satluj Basin



Recreation and tourism  
adjoining historical site



Flood buffer



Scientific and  
educational values



Purifies wastewater



Traps sediment



Recharges groundwater



Habitat for several  
migratory species

Significance

Low

Medium

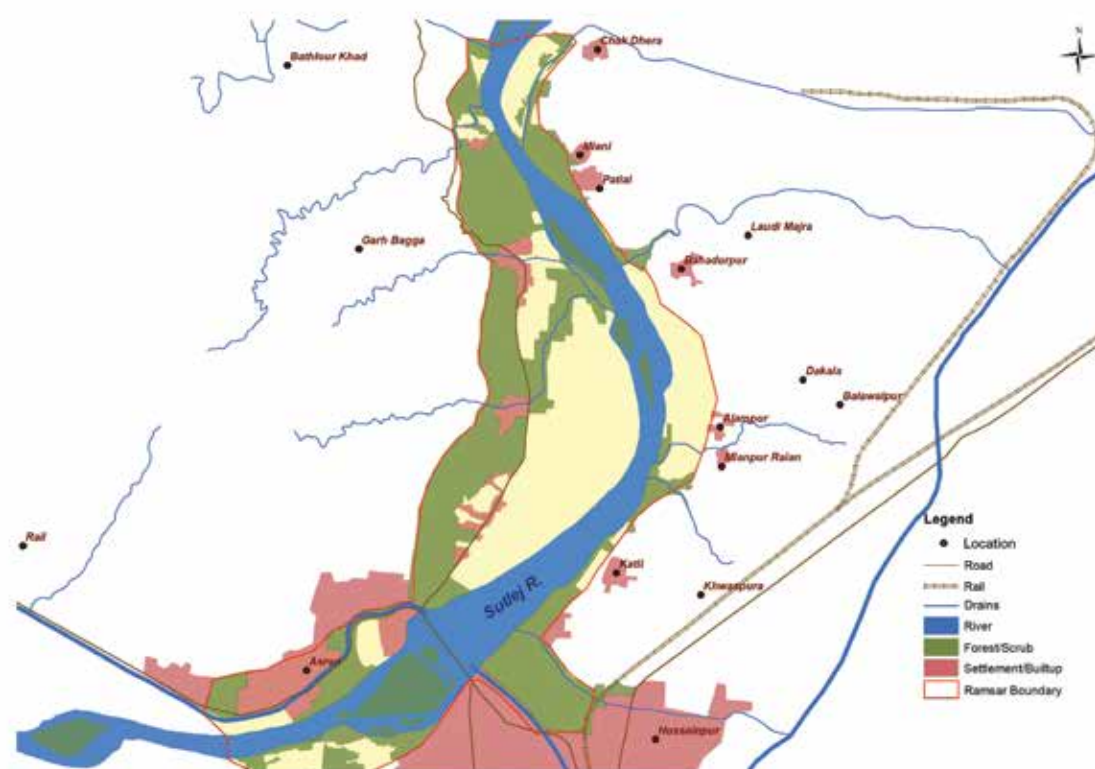
High

Significance

Low

Medium

High



## Threats



Alteration in  
hydrological regimes



Siltation



Pollution from upstream  
cities and towns



Encroachment



Sand Mining

## Species richness

318 Birds

35 Fishes

10 Mammals

22 Reptiles & Amphibians

47 Plants

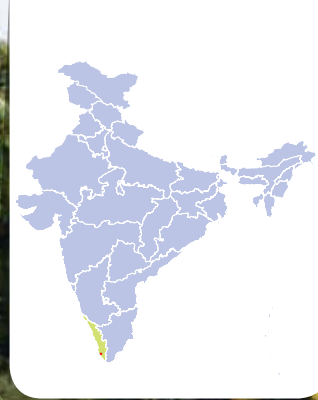
## Species of global conservation significance

Notable	Critically endangered	Endangered	Vulnerable
Hog Deer, Indian Narrow-headed Softshell Turtle, Indian Pangolin			Common Pochard, Wolly-necked Stork, Mrigal Carp, Common Carp, Smooth Indian Otter, Sambar



# Ashtamudi Wetland

## Kerala



Wetlands International South Asia Photo Library

### Date of Designation

August 19, 2002

### Location

Kollam District

### Area

6140 hectares

### Designation Criteria

1,2,3,8

### Wetland Type







Estuary

### Management Authority

State Wetland Authority Kerala



Values and Benefits

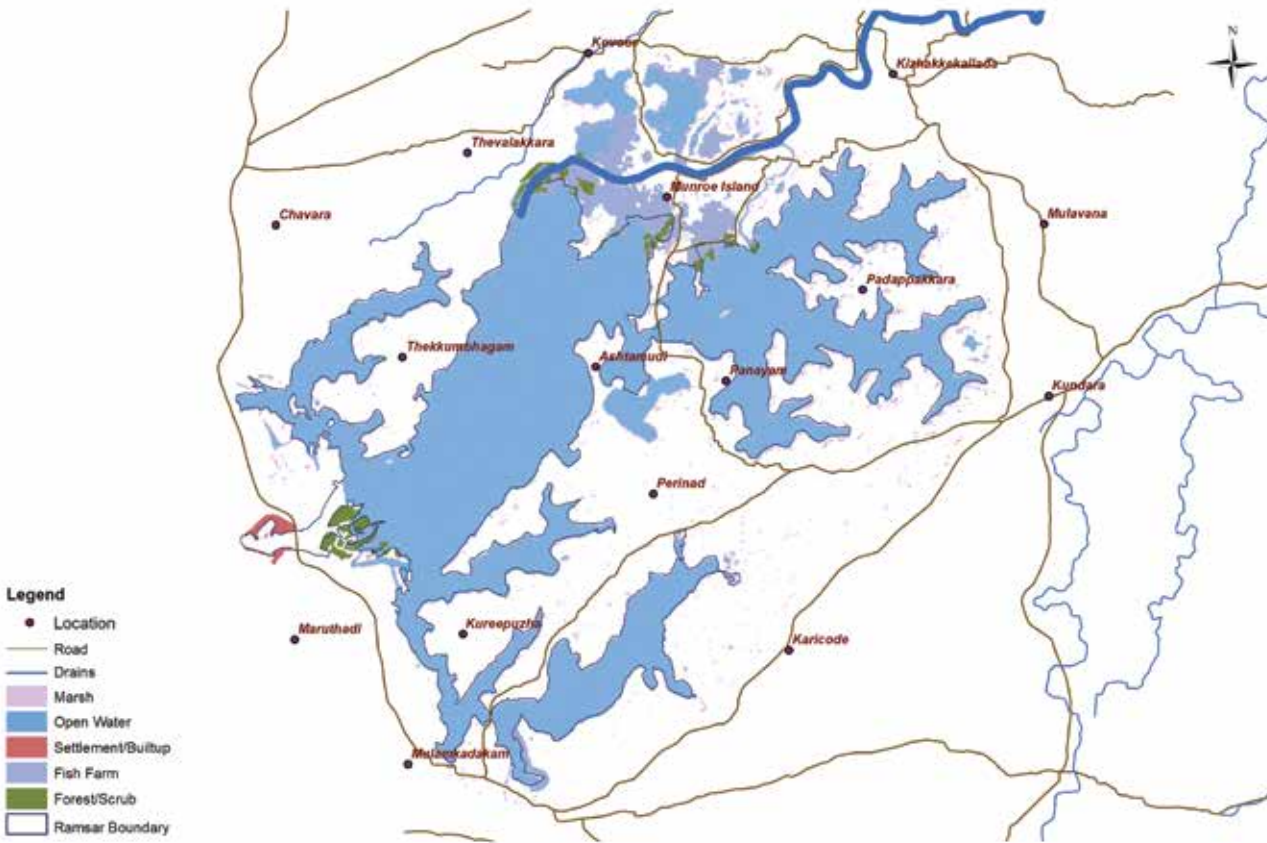
-  Livelihood for 30,000 fishers
-  Carbon sink
-  Flood buffering
-  Prevents shoreline erosion
-  Habitat for migratory fish and water birds
-  Part of famed cochin backwaters

Significance

Low

Medium

High



Significance

Low

Medium

High

Threats

-  Freshwater flow reduction
-  Salinization
-  Silt deprivation
-  Pollution
-  Encroachment
-  High pressure on fishing

Species richness

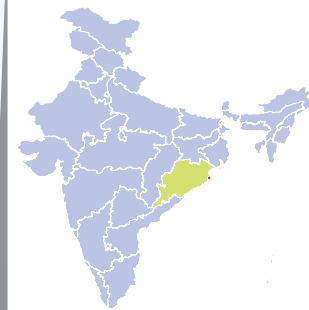
116 Birds  
87 Fishes  
115 Plants

Species of global conservation significance

Notable	Critically endangered	Endangered	Vulnerable
Pearlspot	<i>Syzygium travancoricum</i>		Günther's Catfish, Greater Spotted Eagle

# Bhitarkanika Mangroves

## Odisha



Wetlands International South Asia Photo Library

### Date of Designation

August 19, 2002

### Location

Kendrapada District

### Area

65,000 hectares

### Designation Criteria

2,4,5,8

### Protection Status

Wildlife Sanctuary

### Wetland Type

Mangroves and tidal flats

### Management Authority

Mangrove Forest Division, Odisha



## Values and Benefits



**Fisheries & Aquaculture**  
supports livelihoods  
such as agriculture,  
fishing and aquaculture



Buffers from cyclones  
and tidal surges



Carbon sink



Prevents erosion



**Ecotourism hotspot**  
60,000 tourists per year



**Lifecycle maintenance**  
Nesting site for 0.5  
million Olive Ridley  
Turtles

1700+ Salt-water  
crocodiles (highest  
density of Saltwater  
crocodiles in India)  
60+ mangrove species



Scientific and  
educational importance

Significance

Low

Medium

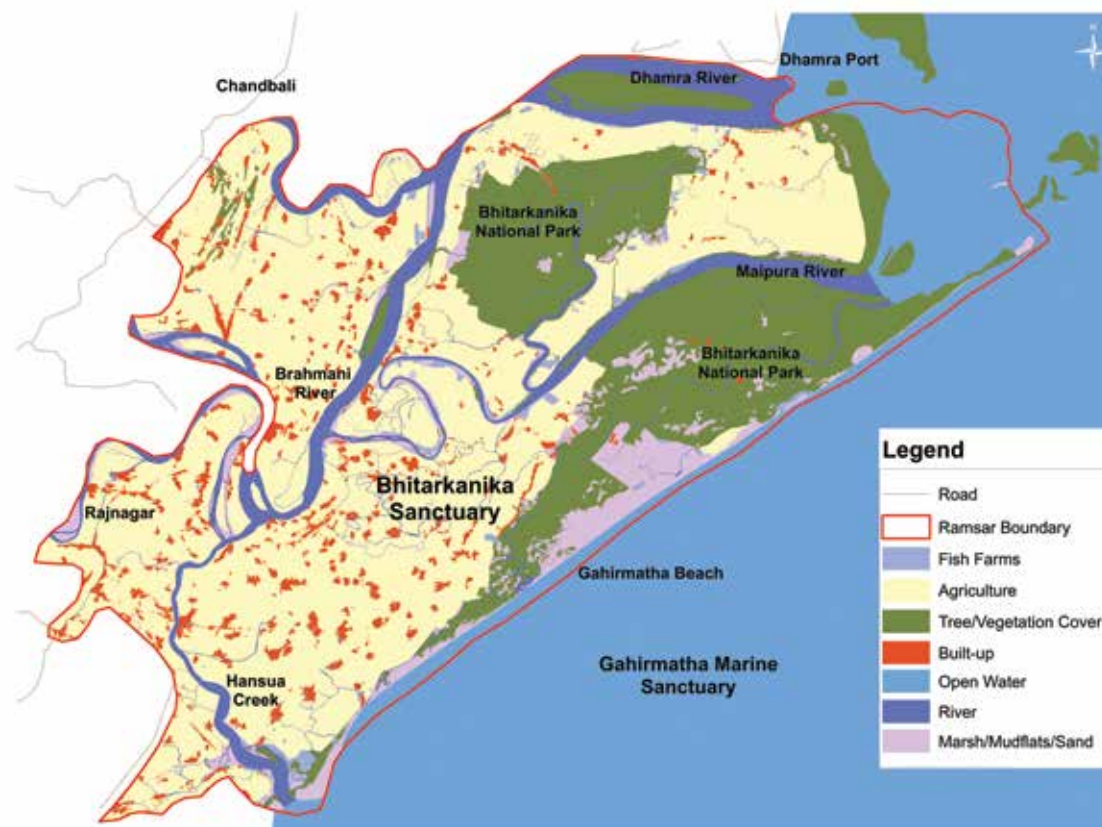
High

Significance

Low

Medium

High



## Threats



Changes in freshwater  
flow



Expansion of and effluents  
from shrimp farms



Proposed expansion of Paradip  
and Dhamra ports



High fishing pressure



Extreme events

## Species richness

280 Birds

33 Fishes

24 Mammals

43 Reptiles & Amphibians

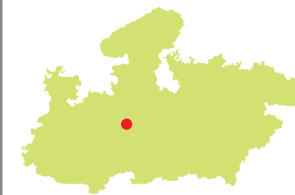
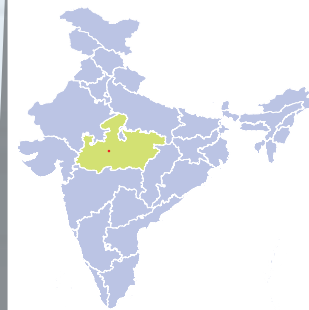
300+ Plants

## Species of global conservation significance

Notable	Critically endangered	Endangered	Vulnerable
Olive Ridley Sea Turtle, Salt-water Crocodile, <i>Avicennia sp.</i> and <i>Heritiera sp.</i>	Baer's Pochard, White-rumped Vulture	Irrawaddy Dolphin, Black-bellied Tern	Indo-Pacific Humpback Dolphin, Scrub Mahogany

# Bhoj Wetland

## Madhya Pradesh



Wetlands International South Asia Photo Library

### Date of Designation

August 19, 2002

### Location

Bhopal District

### Area

3201 hectares

### Designation Criteria

1,2,3,5,8

### Wetland Type





Reservoir

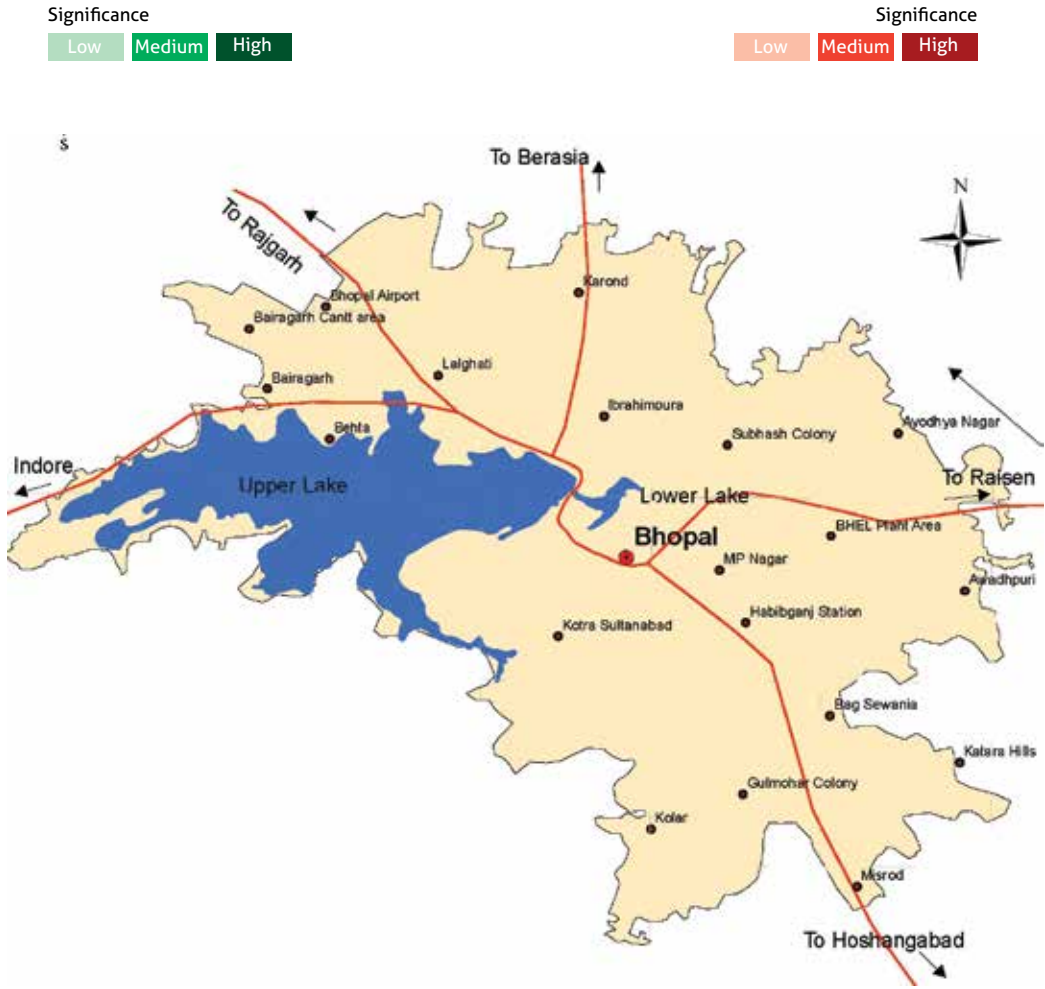
### Management Authority

Bhopal Municipal Corporation



Values and Benefits

-   
Water source for capital city
-   
Livelihoods for 200+ fishers
-   
Buffers floods
-   
Recreation and tourism
-   
Scientific and educational value
-   
Cultural and spiritual importance



Threats

-   
Siltation
-   
Pollution
-   
Encroachment
-   
Invasive species

Species richness

- 160+ Birds
- 43 Fishes
- 10+ Reptiles & Amphibians
- 106 Plants

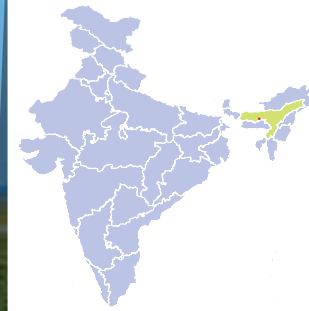
Species of global conservation significance

Notable	Critically endangered	Endangered	Vulnerable
Red-crested Pochard		Egyptian Vulture	Sarus Crane, Wolly-necked Stork



# Deepor Beel

## Assam



Dhritiman Mukherjee

### Date of Designation

August 19, 2002

### Location

Kamrup District

### Area

4000 hectares

### Designation Criteria

1,2,4,7,8

### Protection Status

Part of wetland notified as Wildlife Sanctuary

### Wetland Type

River floodplain

### Management Authority

Forest Department, Assam



## Values and Benefits



Source of fresh water



Recreation and tourism



Support livelihoods of 500+ fishers



Cultural and spiritual importance



Fodder



Medicinal and ornamental resources



Flood buffer for Guwahati city



Lifecycle maintenance of migratory fish and birds

Significance

Low

Medium

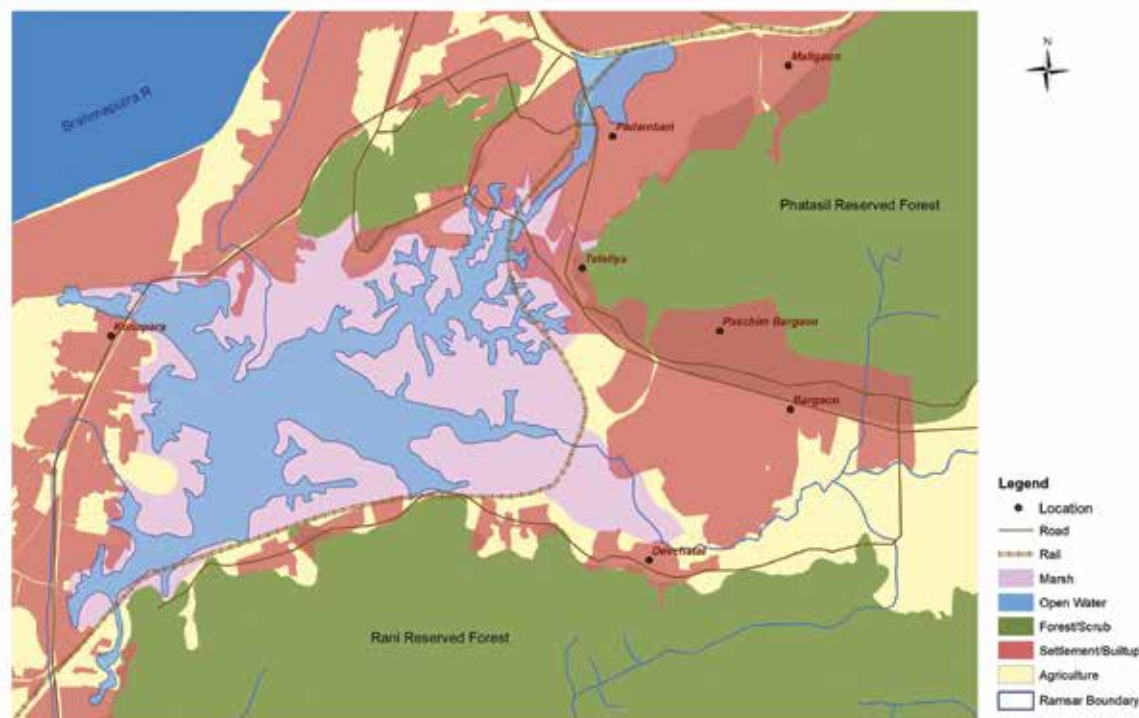
High

Significance

Low

Medium

High



## Threats



Hydrological regime alteration



Pollution from sewage and solid waste dumping



Encroachment



Invasive species



Regime fragmentation by roads and railways

## Species richness

219 Birds

50 Fishes

38 Reptiles & Amphibians

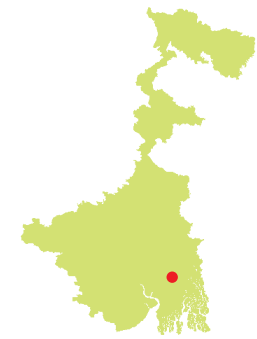
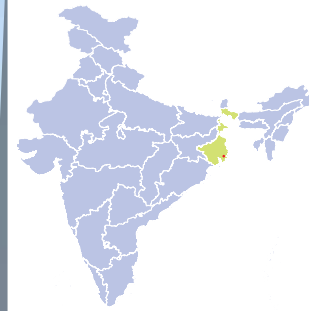
448 Plants

## Species of global conservation significance

Notable	Critically endangered	Endangered	Vulnerable
Asian Elephant	Baer's Pochard	Greater Adjutant, Asian Elephant	Lesser Adjutant

# East Calcutta Wetlands

## West Bengal



Wetlands International South Asia Photo Library

### Date of Designation

August 19, 2002

### Location

Kolkata District

### Area

12,500 hectares

### Designation Criteria

1

### Protection Status

Protected under the East Kolkata Wetlands (Conservation and Management) Act, 2006

### Wetland Type

Aquaculture ponds and Wastewater treatment areas

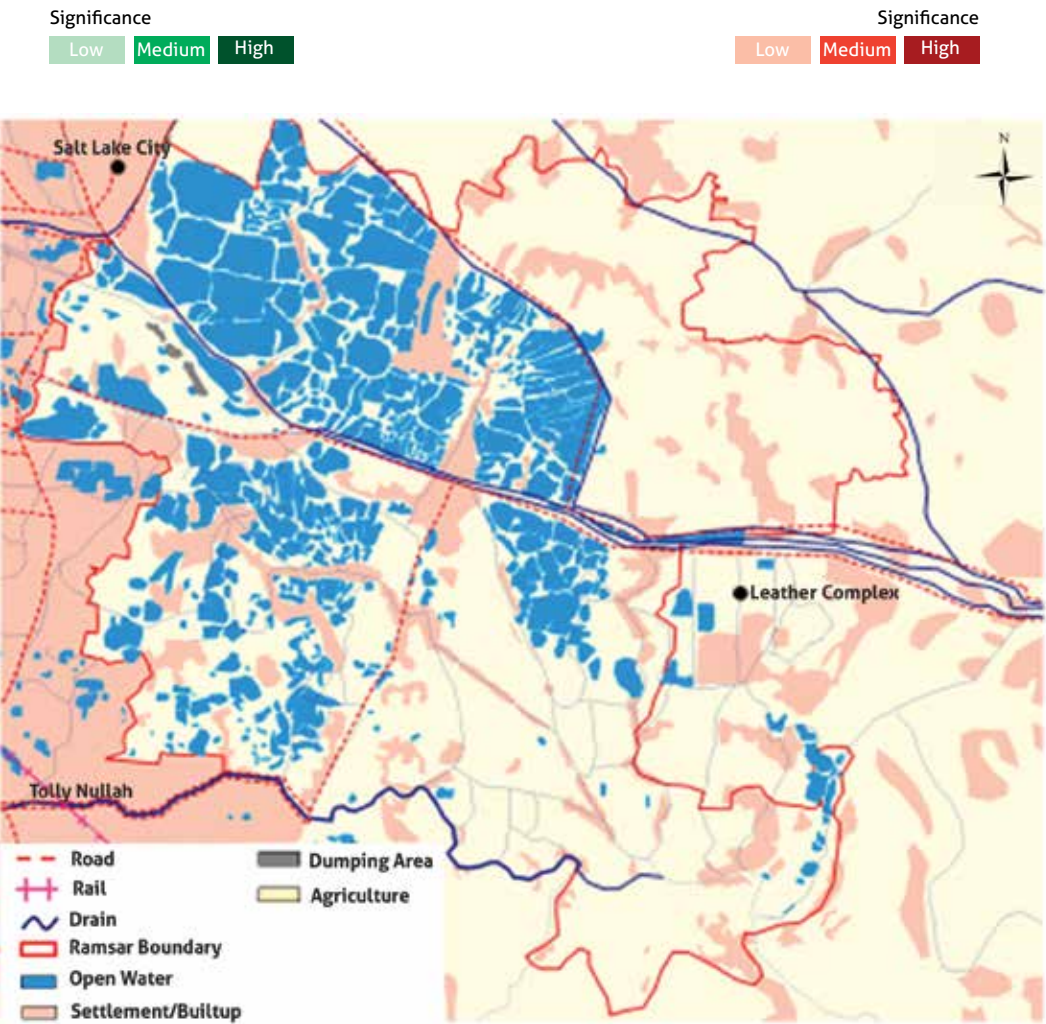
### Management Authority

East Kolkata Wetland Management Authority



Values and Benefits

- Livelihoods for 20,00 0+ families
- Largest assemblage of sewage fed fisheries
- Climate regulation
- Treats Kolkata city's sewage
- Recreation and tourism
- Recreation and tourism



Threats

- Siltation
- Pollution
- Encroachment

Species richness

- 267 Birds
- 45 Fishes
- 20 Mammals
- 49 Reptiles & Amphibians
- 120 Plants

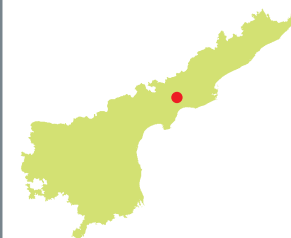
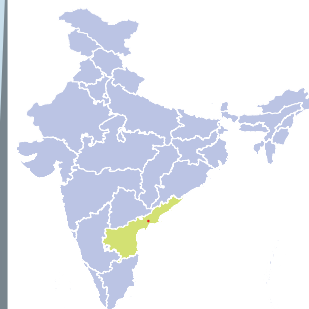
Species of global conservation significance

Notable	Critically endangered	Endangered	Vulnerable
Catla, Rohu, Common Water Monitor, Aztech Arrowhead	Bear's Pochard		Indian Spotted Eagle, Wood Snipe, Common Carp



# Kolleru Lake

## Andhra Pradesh



Wetlands International South Asia Photo Library

### Date of Designation

August 19, 2002

### Location

Krishna and Godavari  
District

### Area

90100 hectares

### Designation Criteria

1,2,4,5,8

### Protection Status

Part designated as Wildlife Sanctuary

### Wetland Type

Lakes, marsh and aquaculture ponds

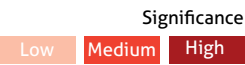
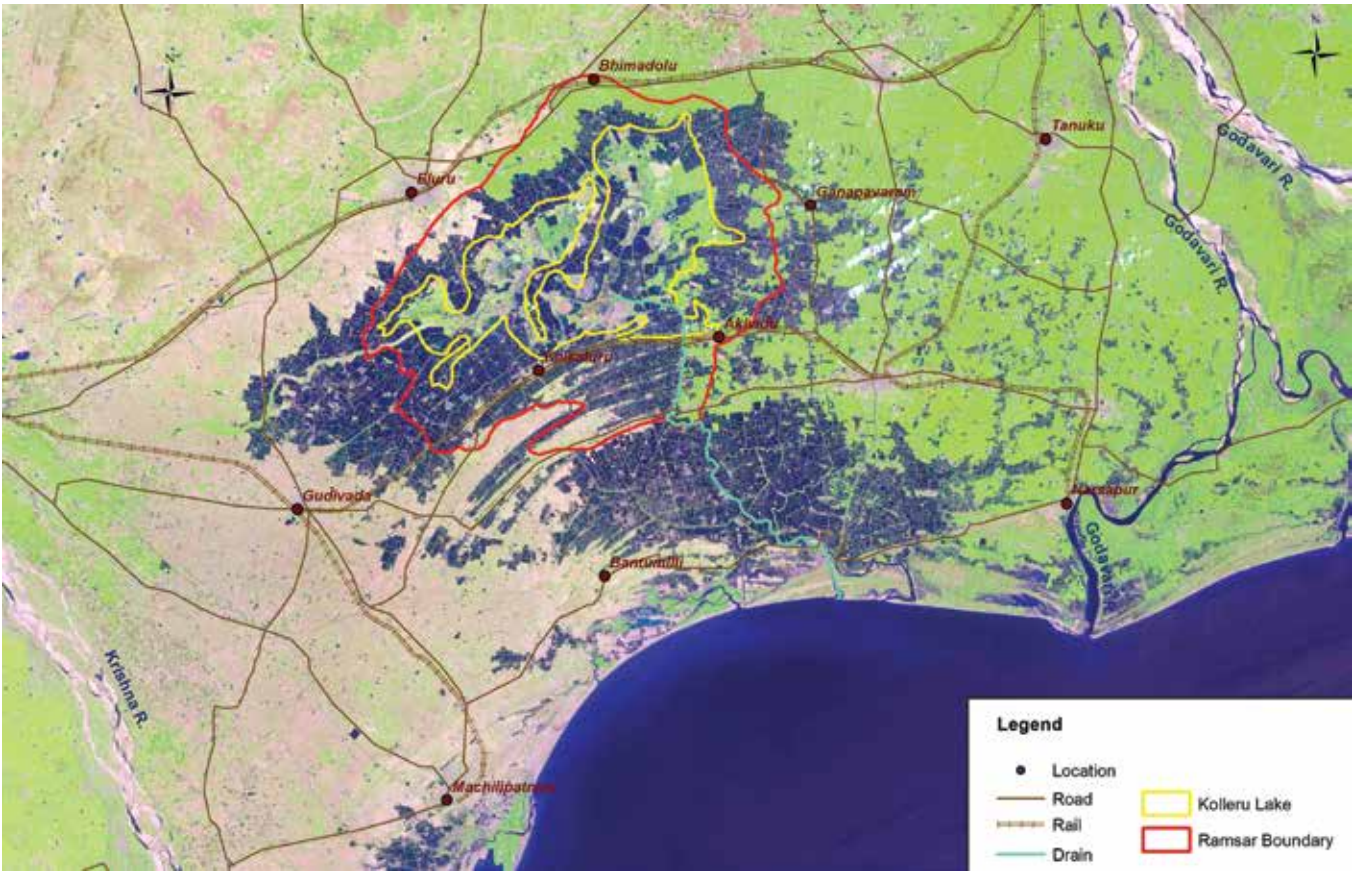
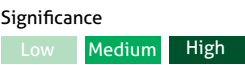
### Management Authority

Andhra Pradesh Forest Department









Values and Benefits

-  Fisheries
-  Buffers floods
-  Habitat for migratory species
-  Recreation and tourism
-  Spiritual and inspirational importance



Threats

-  Hydrological regime regulation
-  Siltation
-  Pollution
-  Aquaculture
-  Invasive species
-  Road network

Species richness

224 Birds  
75 Fishes  
34 Plants

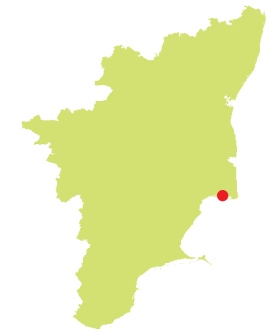
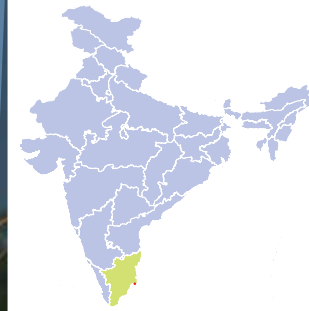
Species of global conservation significance

Notable	Critically endangered	Endangered	Vulnerable
Spot-billed Pelican		Greater Adjutant	Grey Pelican, Lesser Adjutant



# Point Calimere Wildlife and Bird Sanctuary

Tamil Nadu



S. Balachandran

## Date of Designation

August 19, 2002

## Location

Nagapattinam District

## Area

38500 hectares

## Designation Criteria

2,5,6,8

## Protection Status

Part notified as Wildlife Sanctuary and Reserve Forest

## Wetland Type

Mangrove swamps, lagoons, mud-flats, salt pans

## Management Authority

Tamil Nadu Forest Department



## Values and Benefits



~100 MT annual fish catch



Ecotourism hotspot



Nearly 40 km<sup>2</sup> under salt production



Scientific and educational importance



**Blue Carbon Sink**  
120 km<sup>2</sup> of Muthupet mangrove wetland



Sites of historical importance such as Ramar Padam, Modi mandapam and Chola lighthouse



Wintering ground for waterbirds

Nesting site for olive Ridley Turtles

Largest Blackbuck population in Tamil Nadu

~200 species of medicinal plants

### Significance

Low

Medium

High

### Significance

Low

Medium

High



## Threats



Salinisation



Siltation



Pollution from Settlements



Illegal aquaculture



Unsustainable fish harvest

## Species richness

260 Birds

70 Fishes

14 Mammals

37 Reptiles & Amphibians

364 Plants

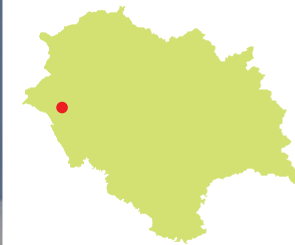
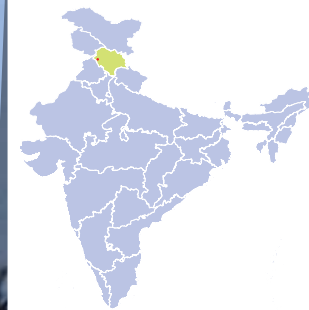
## Species of global conservation significance

Notable	Critically endangered	Endangered	Vulnerable
Blackbuck, Spot-billed Pelican	Spoon-billed Sandpiper, Hawksbill Turtle	Green turtle	Star Tortoise, Olive Ridley Turtle



# Pong Dam Lake

## Himachal Pradesh



S. Balachandran

### Date of Designation

August 19, 2002

### Location

Kangra District

### Area

15662 hectares

### Designation Criteria

2,5,8

### Protection Status

Wildlife Sanctuary

### Wetland Type

Reservoir

### Management Authority

Himachal Pradesh Forest Department



## Values and Benefits



Irrigates 1.6 million ha agricultural land



Moderation of extreme events



Water for 396MW hydropower generation



Erosion prevention



~ 400 tonnes annual fish production  
Livelihood for nearly 2700 fishers



Groundwater recharge



**Lifecycle maintenance**  
Over 1 lakh migratory birds  
One of the world's largest congregation of Bar-headed Geese



Tourism and Recreation



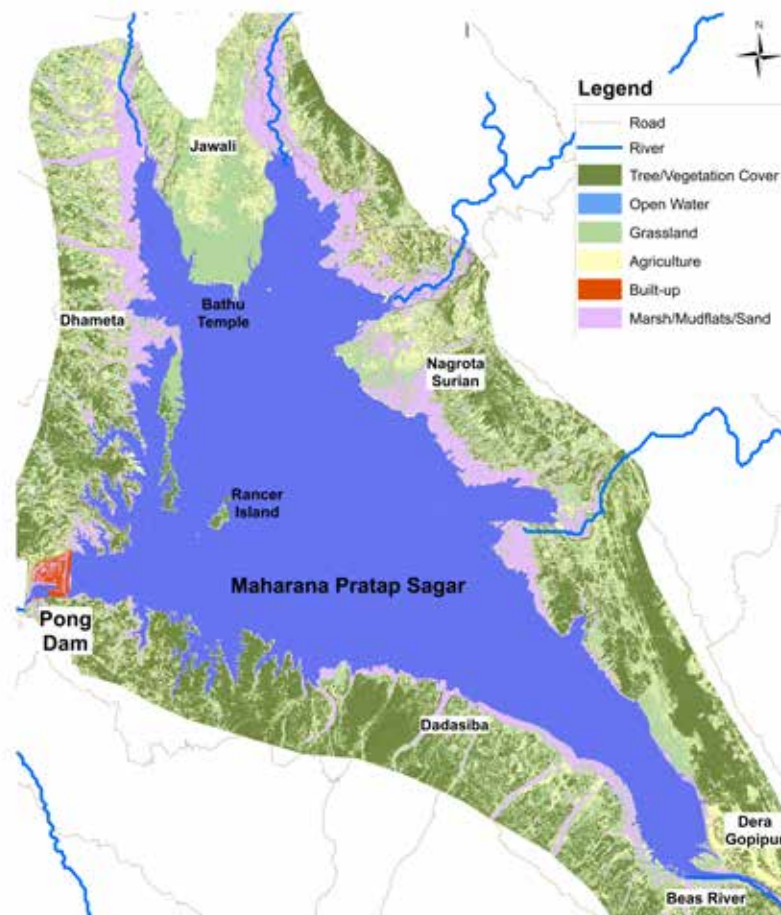
Scientific and educational importance



Cultural and spiritual importance

Significance

Low Medium High



Significance

Low Medium High

## Threats



Hydrological regime alteration / Regime fragmentation



Siltation



Pollution



Unsustainable harvest of wetland resources



Over grazing



Extreme events

## Species richness

400 Birds

27 Fishes

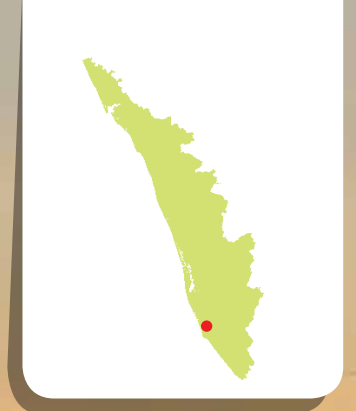
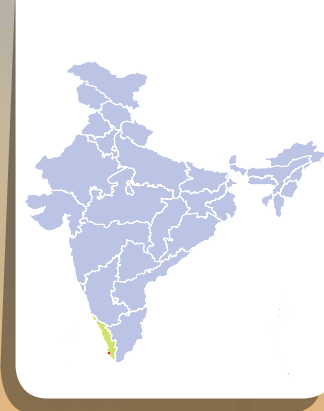
24 Mammals

## Species of global conservation significance

Notable	Critically endangered	Endangered	Vulnerable
Bar-headed Goose	White-rumped Vulture	Black-bellied Tern, Mahaseer	Common Pochard, Woolly-necked Stork, Indian Softshell Turtle

# Sasthamkotta Lake

## Kerala



Wetlands International South Asia Photo Library

### Date of Designation

August 19, 2002

### Location

Kollam District

### Area

373 hectares

### Designation Criteria

1,2,7,8

### Wetland Type

Freshwater lake

### Management Authority

State Wetland Authority Kerala



## Values and Benefits



Water for Kollam city



Means of transport



Buffers flood



Groundwater recharge



Local tourism

Significance

Low Medium High

Significance

Low Medium High

## Threats



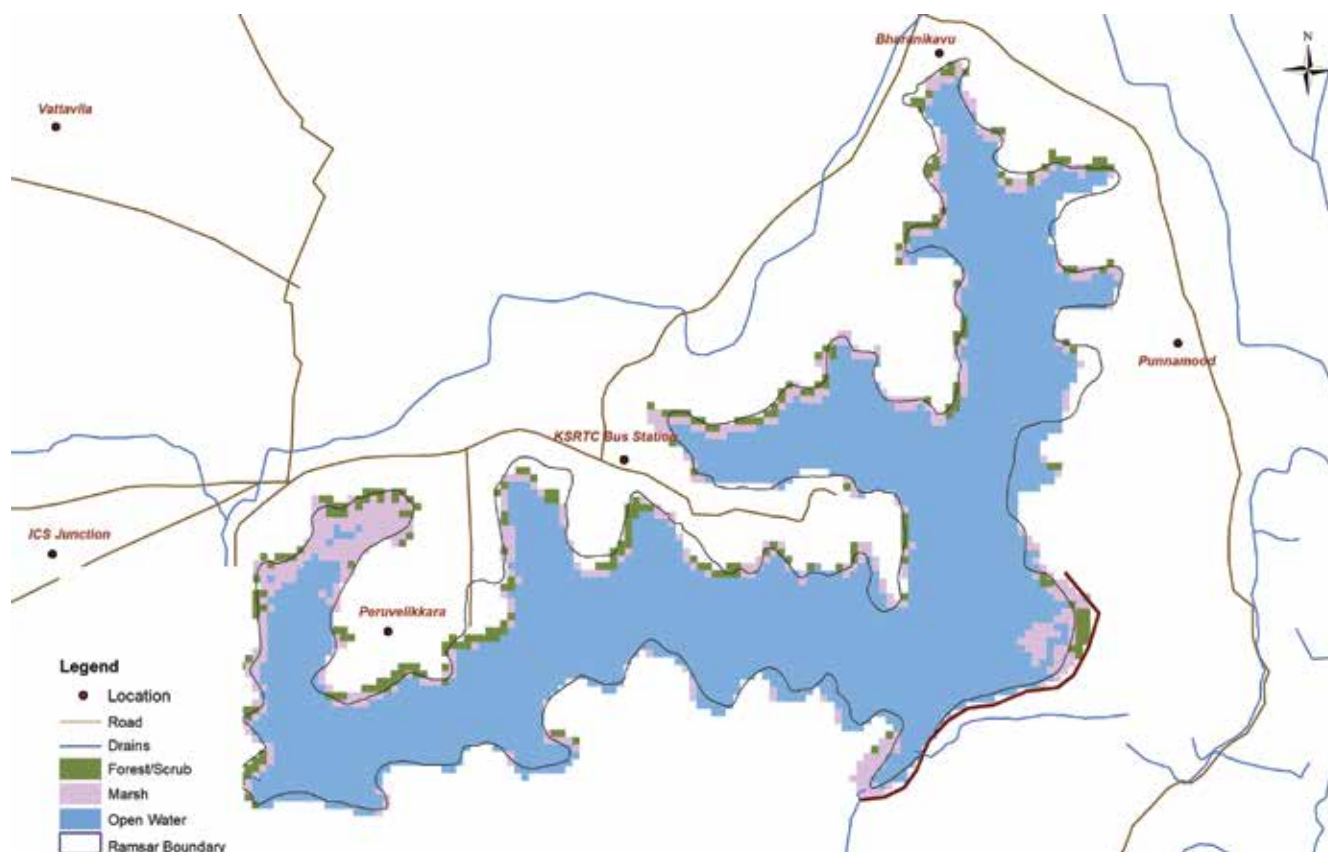
Pollution



Laterite mining



Over abstraction of water



## Species richness

35 Waterbirds

37 Fishes

85 Plants

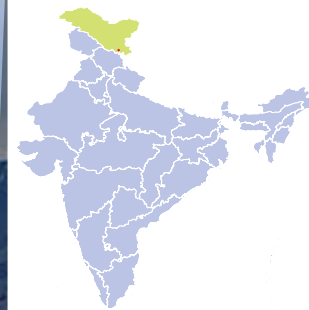
158 Plants and Trees

## Species of global conservation significance

Notable	Critically endangered	Endangered	Vulnerable
Butter Catfish, Day's Glassy Perchlet, Malabar mystus			Gunther's catfish, Wallago Catfish

# Tsomoriri

## Ladakh



Dhritiman Mukherjee

### Date of Designation

August 19, 2002

### Location

Leh District

### Area

12000 hectares

### Designation Criteria

1,2,4

### Protection Status

Conservation Reserve

### Wetland Type

Brackish / Alkaline lake

### Management Authority

Forest Department, Jammu & Kashmir



Values and Benefits



Fodder



Carbon sink



Buffers flood



Breeding ground for  
migratory waterbirds



400-year-old Korzok Monastery  
is a tourism destination



Scientific and  
educational values

Significance

Low

Medium

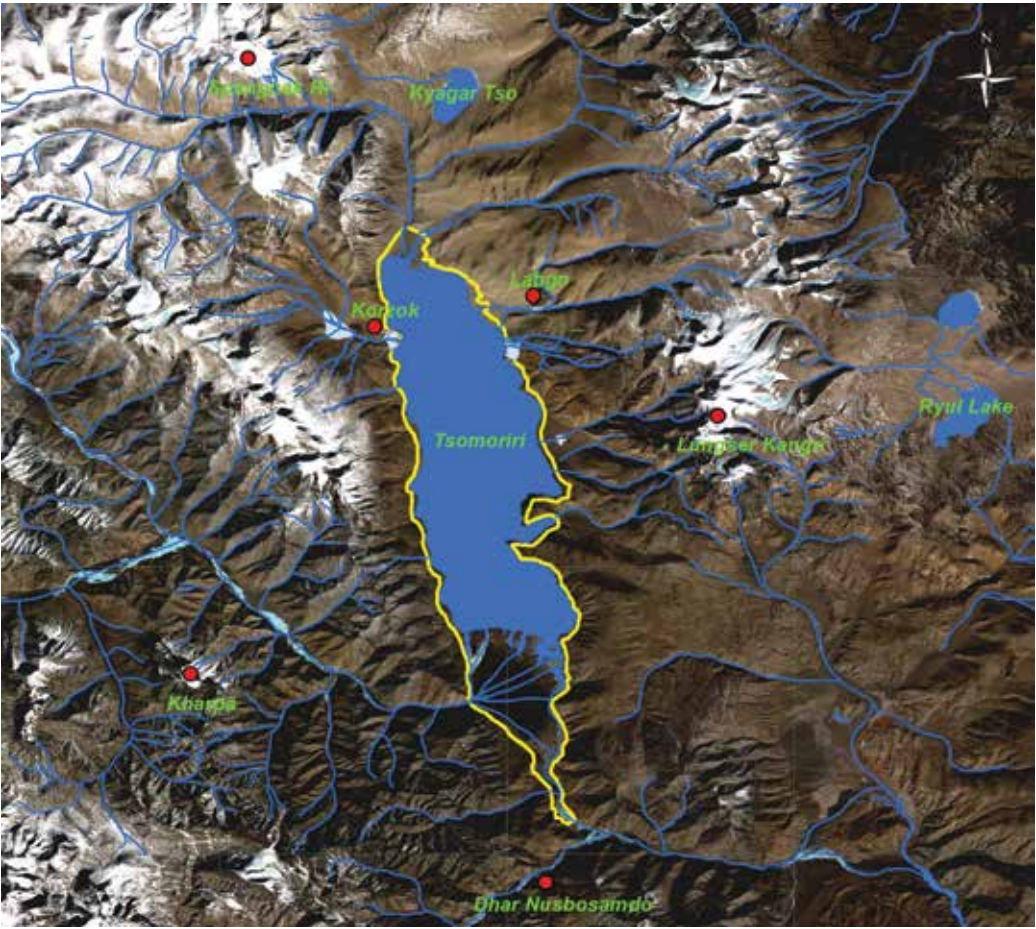
High

Significance

Low

Medium

High



Threats



Over grazing



Construction of roads



Tourism pressure

Species richness

11 Birds

8 Mammals

7 Plants

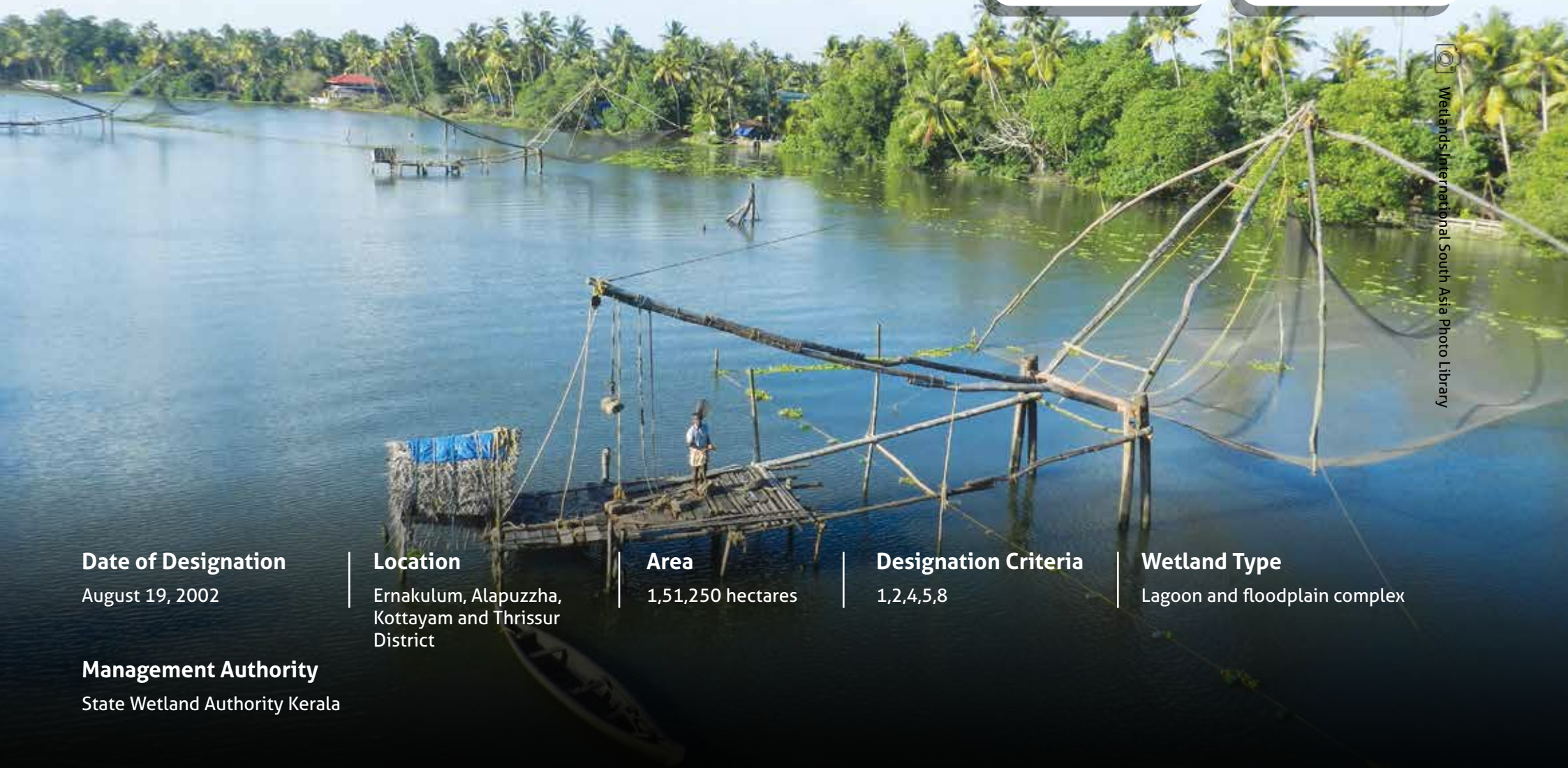
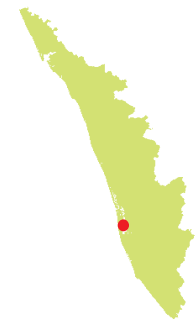
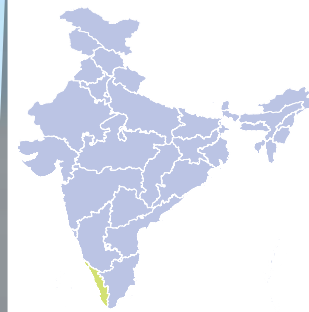
Species of global conservation significance

Notable	Critically endangered	Endangered	Vulnerable
Black-necked Crane			Common Pochard, Black-necked Crane



# Vembanad-Kol Wetland

## Kerala



Wetlands International South Asia Photo Library

### Date of Designation

August 19, 2002

### Location

Ernakulum, Alapuzha,  
Kottayam and Thrissur  
District

### Area

1,51,250 hectares

### Designation Criteria

1,2,4,5,8

### Wetland Type

Lagoon and floodplain complex

### Management Authority

State Wetland Authority Kerala



Values and Benefits



livelihoods for over 0.2 million households  
Kuttanad: Rice bowl of Kerala



Flood buffer for Cochin and Ernakulam cities



Habitat for several migratory species



Backwater tourism



Scientific and educational values v



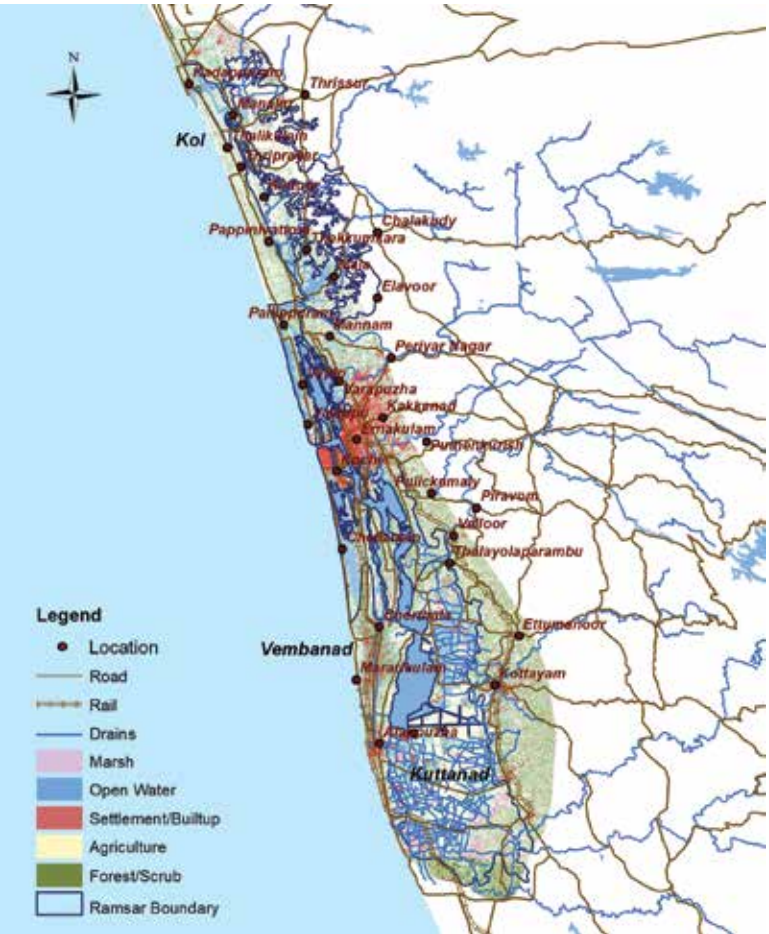
Cultural significance: Pokkali farming-geographical indication

Significance

Low Medium High

Significance

Low Medium High



Threats



Regulation by Thaneermukkom barrier



Pollution



Encroachment



Invasive species



Regime fragmentation



Tourism pressure

Species richness

225 Birds

102 Fishes

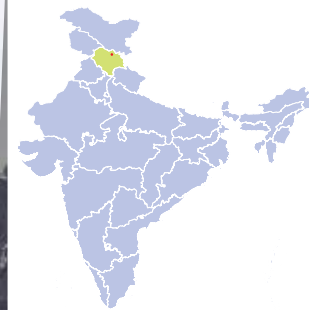
200+ Plants

Species of global conservation significance

Notable	Critically endangered	Endangered	Vulnerable
Pearl Spot, Malabar mystus, Day's round herring		Steppe Eagle	Wooly-necked Stork, Gunther's catfish

# Chandertal Wetland

## Himachal Pradesh



Wetlands International South Asia Photo Library

### Date of Designation

November 8, 2005

### Location

Lahaul & Spiti District

### Area

49 hectares

### Designation Criteria

2,3

### Protection Status

Wildlife Sanctuary

### Wetland Type

Freshwater lake

### Management Authority

Himachal Pradesh Forest Department



## Values and Benefits



Source of freshwater



Lifecycle Maintenance



Medicinal plants



Tourism & recreation



Carbon storage in Peatlands



Scientific and educational importance



Buffers flash floods



Cultural and spiritual value



Erosion prevention



Recharges groundwater

Significance

Low

Medium

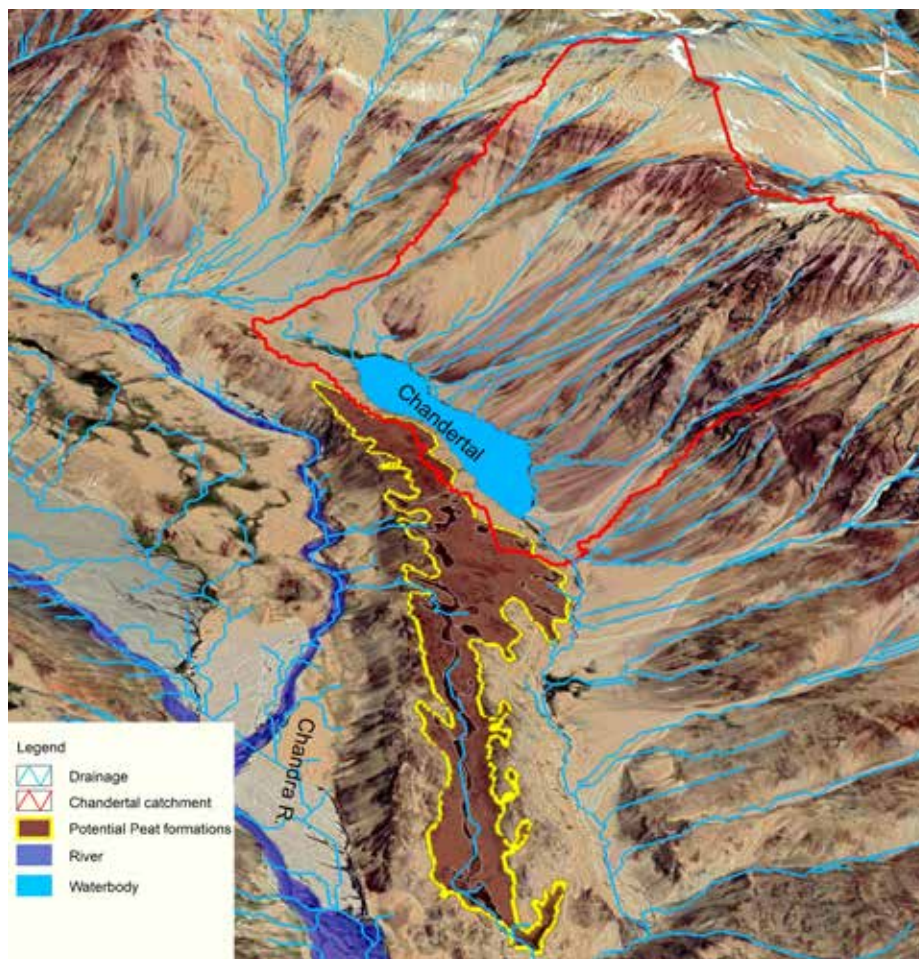
High

Significance

Low

Medium

High



## Threats



Siltation



Solid water



Over Grazing



Unsustainable tourism



Climate Change

## Species richness

26 Birds

11 Mammals

28 Plants

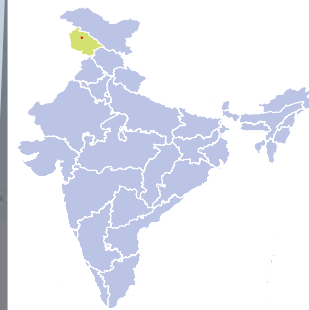
## Species of global conservation significance

Notable	Critically endangered	Endangered	Vulnerable
Snow Leopard, Tibetan Wolf, Himalayan Ibex, Ruddy Shelduck			Snow Leopard



# Hokera Wetland

## Jammu and Kashmir



Wetlands International South Asia Photo Library

### Date of Designation

November 8, 2005

### Location

Budgam and Srinagar  
Districts

### Area

1375 hectares

### Designation Criteria

2,4,5,8

### Protection Status

Conservation Reserve

### Wetland Type

Marshes

### Management Authority

Department of Wildlife Protection,  
Jammu & Kashmir



## Values and Benefits



Water for agriculture



Scientific and educational value



Fisheries, supports livelihood for 30 villages,



Tourism and recreation



Ground water recharge,



Reeds, fibre and fodder



Flood protection



Water purification

Significance

Low Medium High

Significance

Low Medium High

## Threats



Siltation



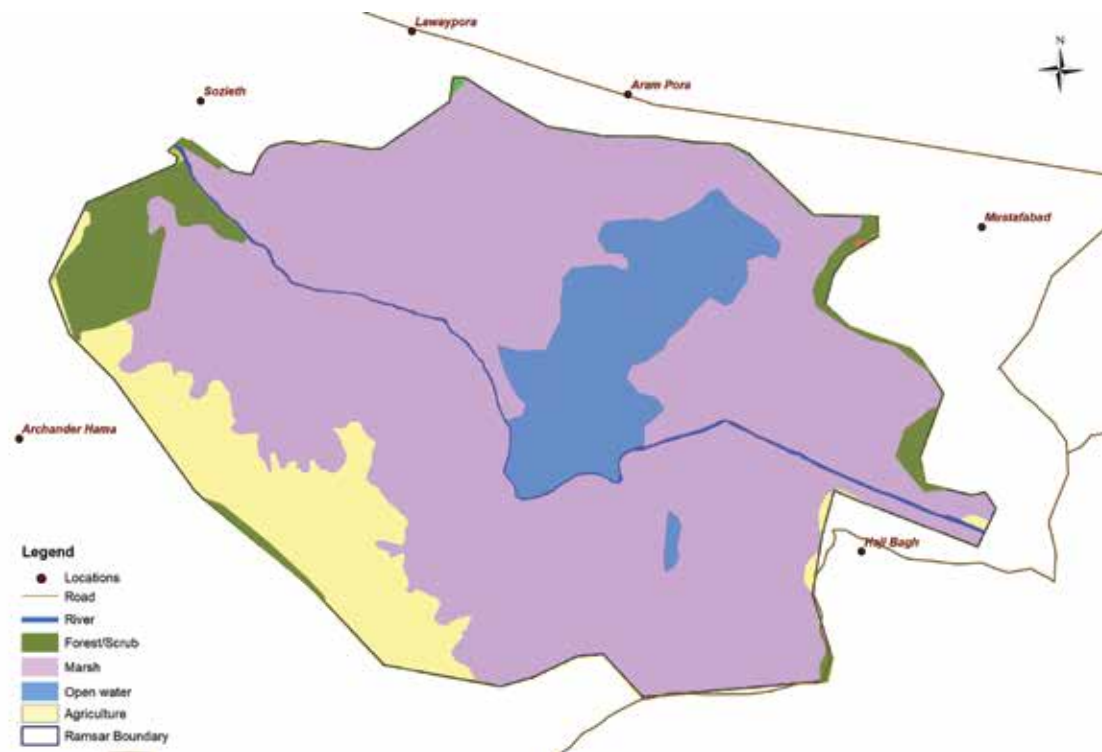
Pollution



Encroachment



Invasive species



## Species richness

68 Birds

38 Plants

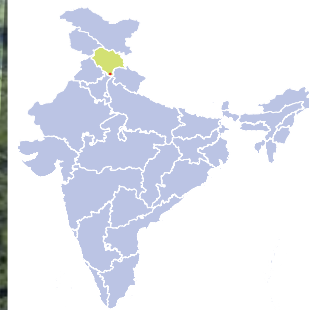
## Species of global conservation significance

Notable	Critically endangered	Endangered	Vulnerable
Eurasian Otter, Schizothorax sp., Little Grebe		Pallas's Fish-Eagle	Common Carp, Common Pochard



# Renuka Wetland

## Himachal Pradesh



Wetlands International South Asia Photo Library

### Date of Designation

November 8, 2005

### Location

Sirmaur District

### Area

20 hectares

### Designation Criteria

3,4

### Protection Status

Wildlife Sanctuary

### Wetland Type

Freshwater lake and marshes

### Management Authority

Himachal Pradesh Forest Department



## Values and Benefits



Freshwater for domestic use and irrigation



Groundwater recharge



Moderation of extreme events



Lifecycle maintenance



Erosion prevention



Tourism and recreation



water purification



Scientific and educational importance



**Cultural and spiritual importance**

Sacred land based on the legend of Renuka ji and Lord Parshuram

2-3 lakh pilgrims visit during annual 6-day Renuka ji fair

Significance

Low

Medium

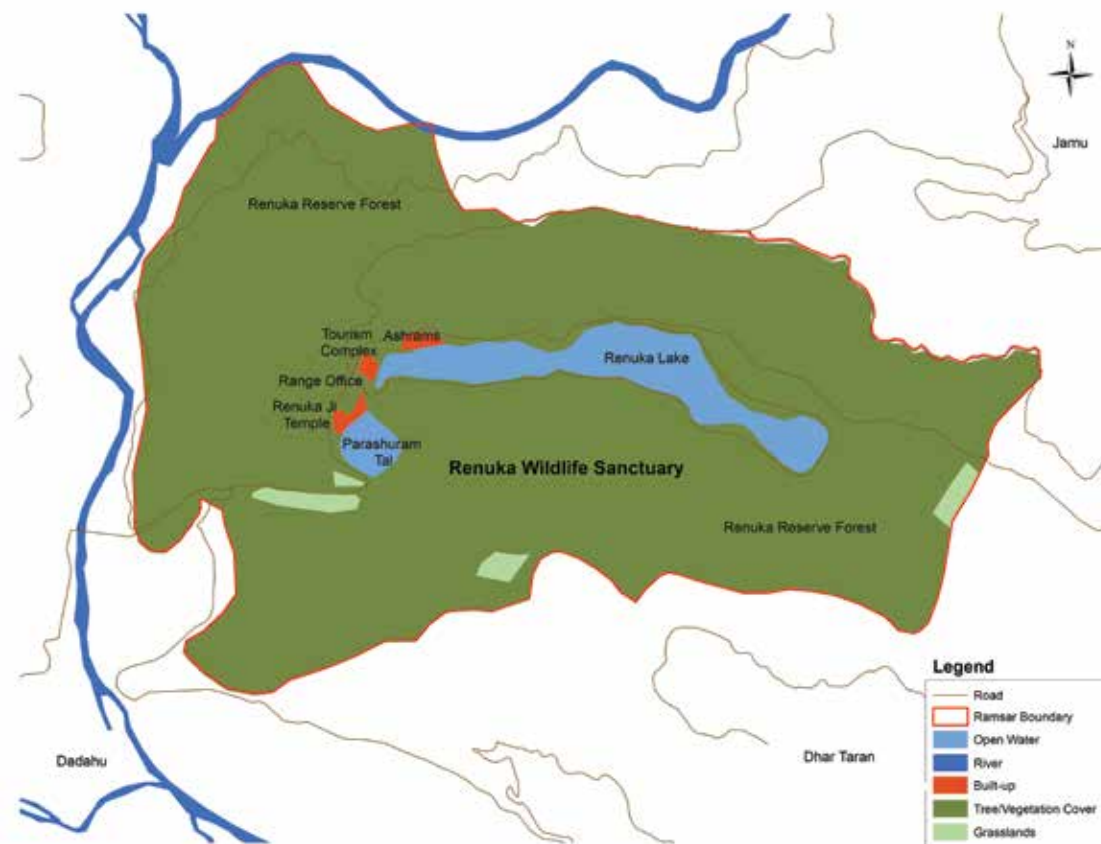
High

Significance

Low

Medium

High



## Threats



Siltation



Pollution



High tourism pressure

## Species richness

103 Birds

19 Fishes

23 Amphibians & Reptiles

42 Plants

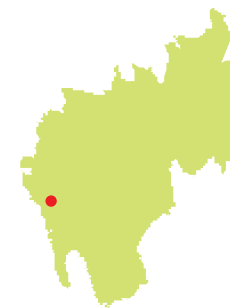
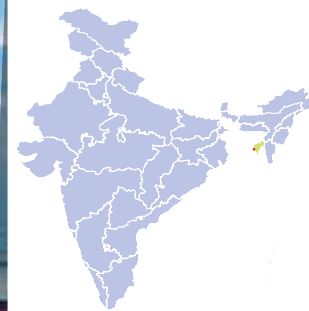
## Species of global conservation significance

Notable	Critically endangered	Endangered	Vulnerable
Mahseer		Golden Mahseer	



# Rudrasagar Lake

## Tripura



Dhritiman Mukherjee

### Date of Designation

November 8, 2005

### Location

West Tripura District

### Area

240 hectares

### Designation Criteria

2,3,8

### Wetland Type

Freshwater lake and marshes

### Management Authority

Department of Fisheries, Government of Tripura



## Values and Benefits



Freshwater for domestic use and irrigation



Source of fisheries



Provides medicinal and ornamental resources



Buffers floods



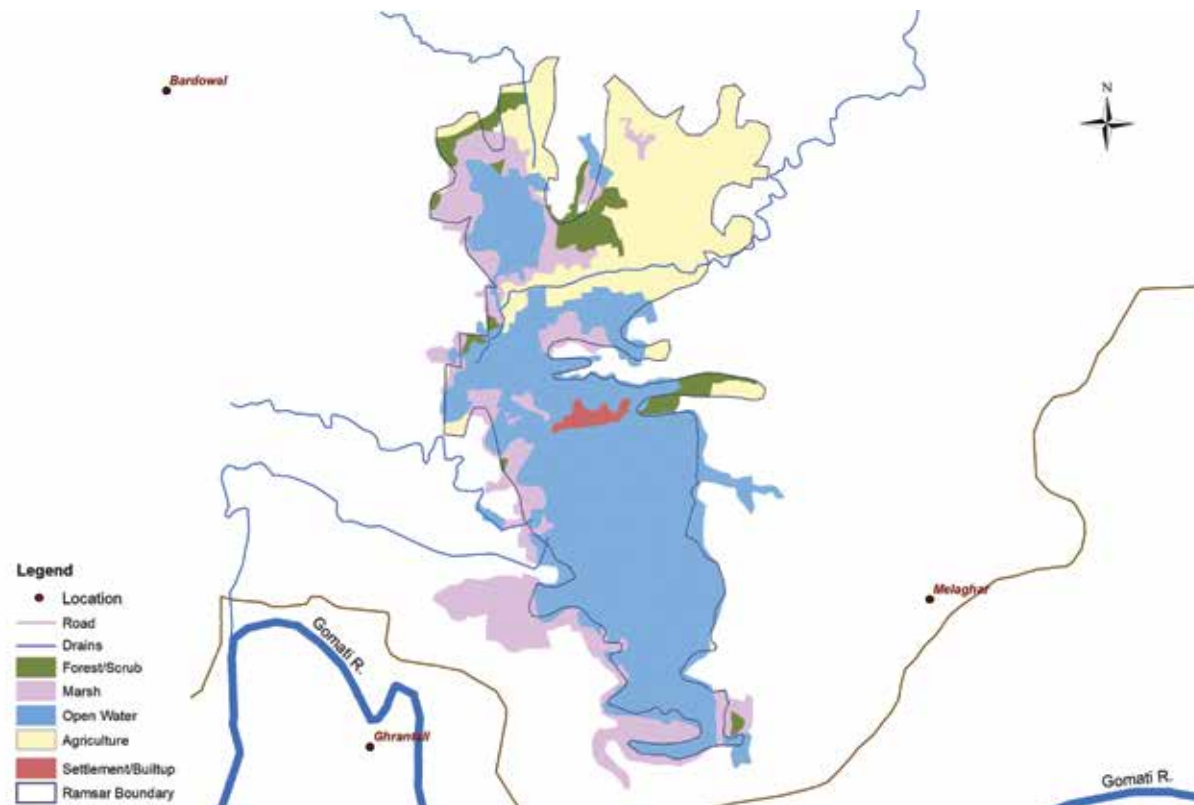
Neer mahal is a tourist attraction, having 3,00,000+ visitors annually



Cultural services valued at 33000 US dollars.

## Significance

Low Medium High



## Significance

Low Medium High

## Threats



Hydrological regime alteration



Pollution/ disposal of urban sewage



Siltation



Encroachment



Invasive species



Regime fragmentation by roads

## Species richness

50+ Fishes

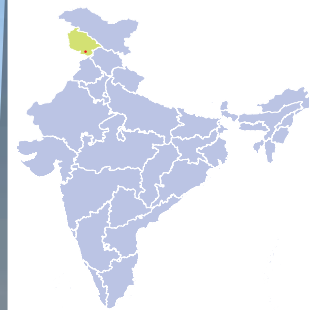
13 Plants

## Species of global conservation significance

Notable	Critically endangered	Endangered	Vulnerable
	Baer's Pochard	Three striped Roof Turtle, Greater Adjutant	Common Pochard, Lesser Adjutant, Common Carp, Wallago Catfish

# Surinsar-Mansar Lakes

## Jammu and Kashmir



Pankaj Chandan

### Date of Designation

November 8, 2005

### Location

Udhampur District

### Area

350 hectares

### Designation Criteria

2,3,4

### Protection Status

Wildlife Sanctuary

### Wetland Type

Freshwater lakes

### Management Authority

Surinsar-Mansar Development Authority



Values and Benefits



Water for agriculture



Recharges groundwater



Fodder for livestock



Buffers floods



Tourism and recreation



Religious tourism

Significance

Low Medium High

Significance

Low Medium High



Threats



Siltation



Pollution



Invasive species

Species richness

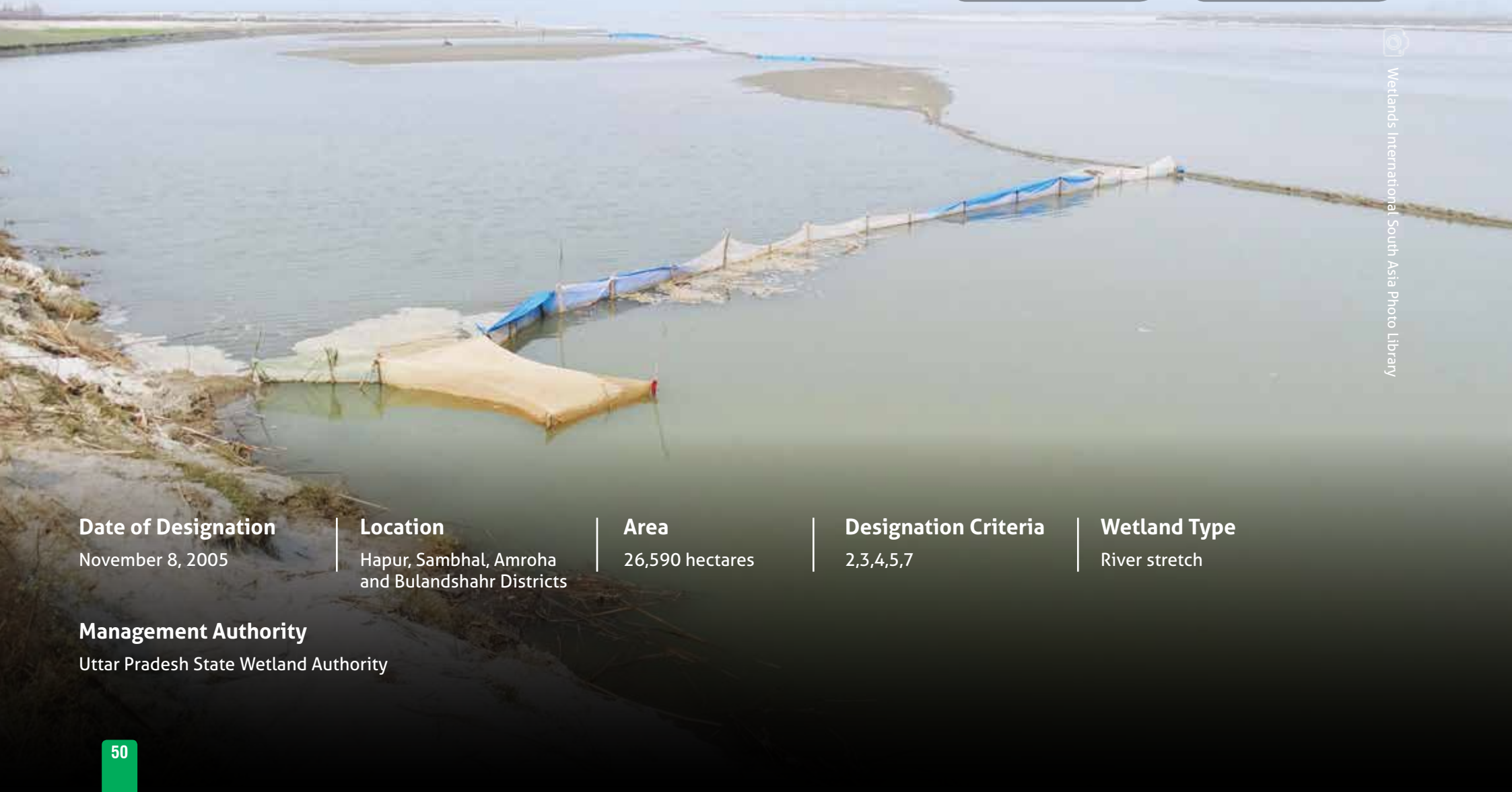
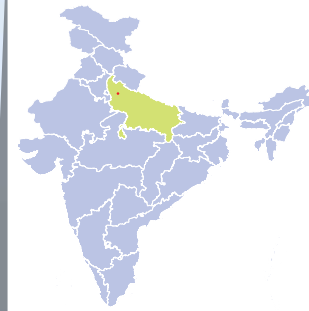
- 34 Birds
- 8 Fishes
- 8 Mammals
- 2+ Reptiles & Amphibians
- 28 Plants

Species of global conservation significance

Notable	Critically endangered	Endangered	Vulnerable
Indian Flapshell Turtle			Common Pochard, Indian Softshell Turtle, Common Carp

# Upper Ganga River

## Uttar Pradesh



Wetlands International South Asia Photo Library

### Date of Designation

November 8, 2005

### Location

Hapur, Sambhal, Amroha  
and Bulandshahr Districts

### Area

26,590 hectares

### Designation Criteria

2,3,4,5,7

### Wetland Type

River stretch

### Management Authority

Uttar Pradesh State Wetland Authority



## Values and Benefits



Provides water for irrigation



Tourism and recreation



Support fisheries



Bathing ghats having religious value namely Brijghat, Anoopshahr ghat and Rajghat



Buffers flood



Traps sediment and water purification



Recharges groundwater



Habitat for migratory species

Significance

Low

Medium

High

Significance

Low

Medium

High



## Threats



Hydrological regime alteration



Spread of invasive species



Siltation



Tourism pressure



Encroachment



Pollution due to agricultural runoff



High pressure on wetland resources



Mining

## Species richness

100+ Birds

82 Fish

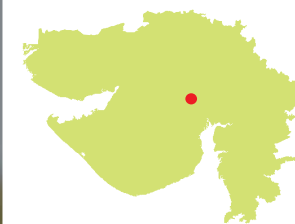
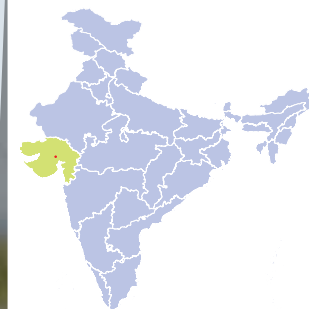
12 Turtles

## Species of global conservation significance

Notable	Critically endangered	Endangered	Vulnerable
Gangetic Dolphin	Gharial, White-rumped Vulture, Red-crowned Roofed Turtle	Pallas's Fish-eagle, Gangetic Dolphin	Wolly-necked Stork

# Nalsarovar

## Gujarat



Wetlands International South Asia Photo Library

### Date of Designation

September 24, 2012

### Location

Surendranagar and  
Ahemdabad Districts

### Area

12000 hectares

### Designation Criteria

1,2,3,4,5,6

### Protection Status

Bird Sanctuary

### Wetland Type

Marsh

### Management Authority

Forest Department, Gujarat



## Values and Benefits



Support livelihood of  
40,000+ fishers



Cultural and spiritual  
importance



Provides food & fodder



Support several grass  
species



Maintains hydrological  
regime



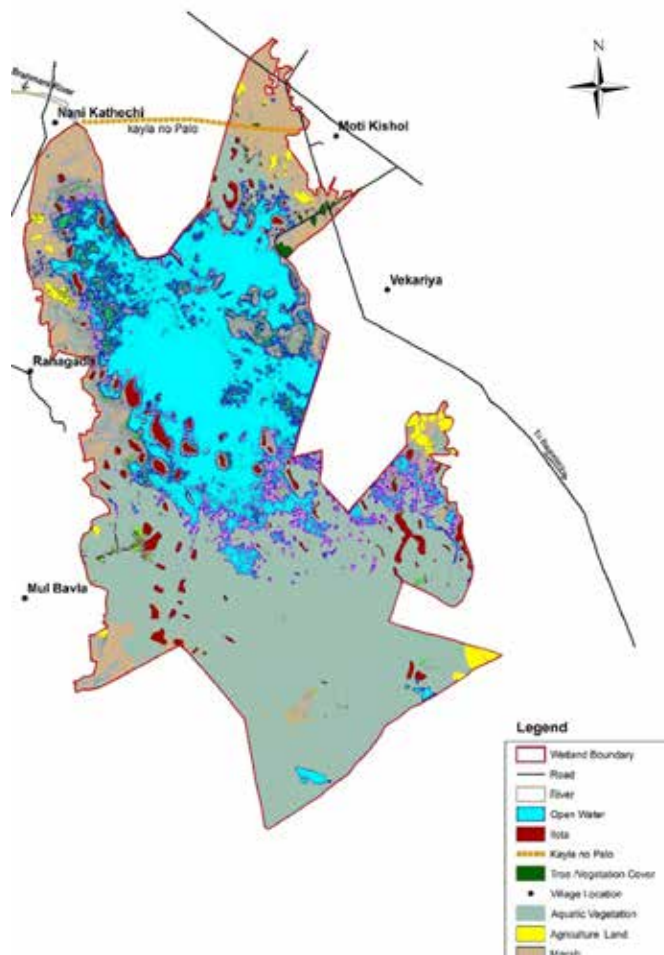
Supports large congregation of  
waterbirds



Attracts 70,000+ visitors  
annually

Significance

Low Medium High



Significance

Low Medium High

## Threats



Pollution



Poaching, high pressure  
on resources



Unsustainable tourism

## Species richness

250 Birds

20 Fishes

13 Mammals

11 Ambhians & Reptiles

153 Plants

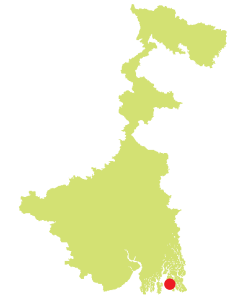
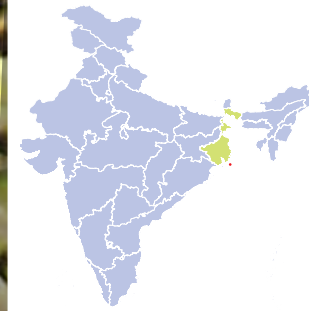
## Species of global conservation significance

Notable	Critically endangered	Endangered	Vulnerable
Greater Flamingo, Dalmatian Pelican	Sociable Lapwing, Red- headed Vulture, White- rumped Vulture	Indian Wild Ass, Spotted Greenshank, Lesser Florican, Black-bellied Tern, Pallas's Fish Eagle	Eastern Imperial Eagle



# Sundarban Wetland

## West Bengal



David V. Raju

### Date of Designation

January 30, 2019

### Location

24 Parganas District

### Area

423000 hectares

### Designation Criteria

2,3,7,8

### Protection Status

National Park

### Wetland Type

Mangrove swamps, mud flats, lagoons

### Other designations

UNESCO World Heritage Site  
UNESCO Biosphere Reserve

### Management Authority

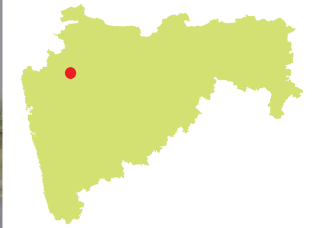
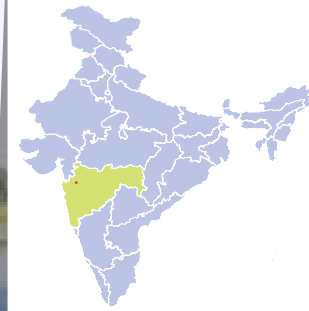
West Bengal Forest Department





# Nandur Madhameshwar

## Maharashtra



Bharat Baburao Shinde

### Date of Designation

June 21, 2019

### Location

Nashik District

### Area

1437 hectares

### Designation Criteria

2,3,4,5,6,7,8

### Protection Status

Wildlife Sanctuary

### Wetland Type

Barrage & water storage area

### Management Authority

Maharashtra Forest Department (Wildlife Wing)



## Values and Benefits



Provides water for domestic use and irrigation



Lifecycle maintenance of Migratory fish and water bird



Micro-climate regulation



Site for tourism and recreation



Flood control



Scientific and educational value



Water Purification



Madhmeshwar temple is a pilgrimage site



Prevention of erosion



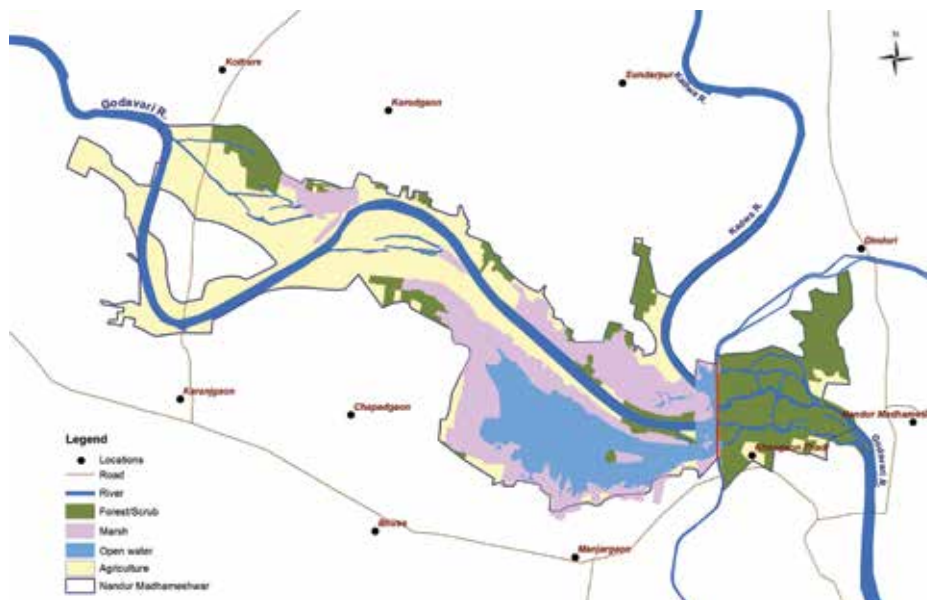
Ground water recharge

Significance

Low

Medium

High



Significance

Low

Medium

High

## Threats



Hydrological regime alteration



Unsustainable tourism



Pollution



Unsustainable fish harvest



Regime fragmentation



Over-grazing



Unsustainable water abstraction



Invasive species

## Species richness

256 Birds

8 Fishes

8 Mammals

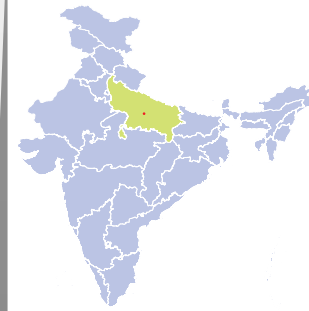
536 Plants

## Species of global conservation significance

Notable	Critically endangered	Endangered	Vulnerable
Butter Catfish	White-rumped Vulture, Indian Vulture, Deolali Minnow	Egyptian Vulture, Kooral	Common Pochard, Bristled Grassbird, Woolly-necked Stork, Shalyni Barb

# Nawabganj Bird Sanctuary

Uttar Pradesh



Uttar Pradesh State Wetlands Authority

## Date of Designation

September 19, 2019

## Location

Unnao District

## Area

224.6 hectares

## Designation Criteria

2,3,4,5,6

## Protection Status

Bird Sanctuary

## Wetland Type

Marsh

## Management Authority

Uttar Pradesh State Wetland Authority



Values and Benefits

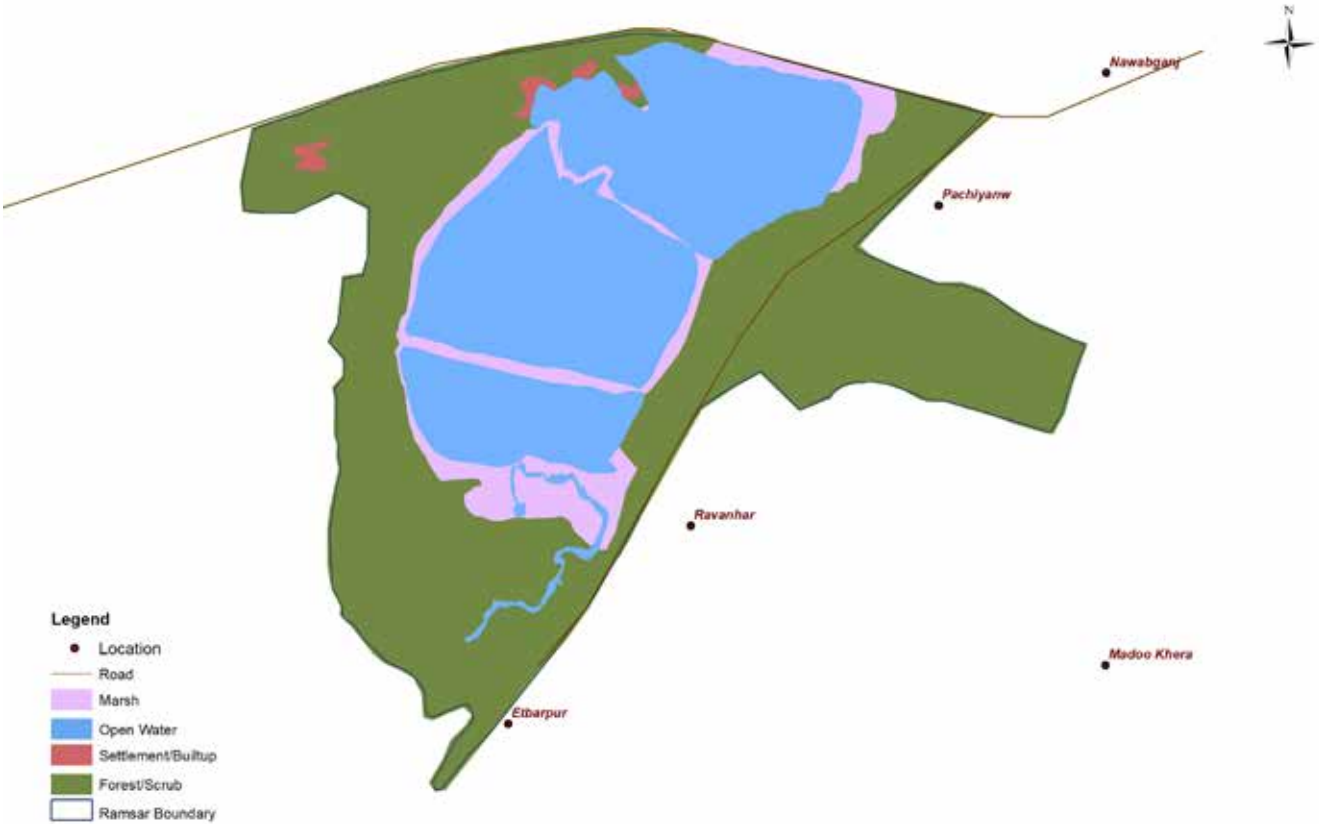
- Buffer floods
- Groundwater recharge
- Habitat for migratory water birds
- Tourism and recreation
- Scientific and educational values

Significance

Low

Medium

High



Threats

- Canalization
- Siltation
- Pollution
- Invasive species

Species richness

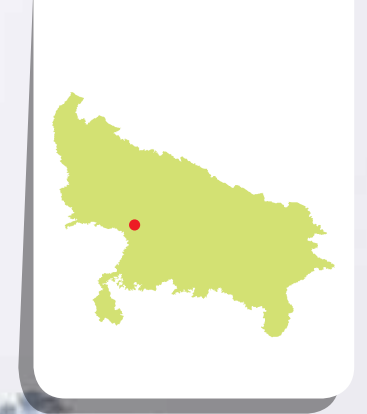
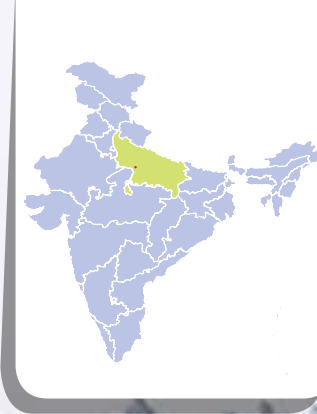
220 Birds  
20 Fishes  
200 Plants

Species of global conservation significance

Notable	Critically endangered	Endangered	Vulnerable
		Palla's fish eagle, Egyptian Vulture	Greater Spotted Eagle, Common Pochard, Woolly necked stork, Lesser Adjutant

# Sarsai Nawar Jheel

## Uttar Pradesh



Uttar Pradesh State Wetlands Authority

### Date of Designation

September 19, 2019

### Location

Etawah District

### Area

161.3 hectares

### Designation Criteria

2,3,5,7,8

### Wetland Type






Marsh

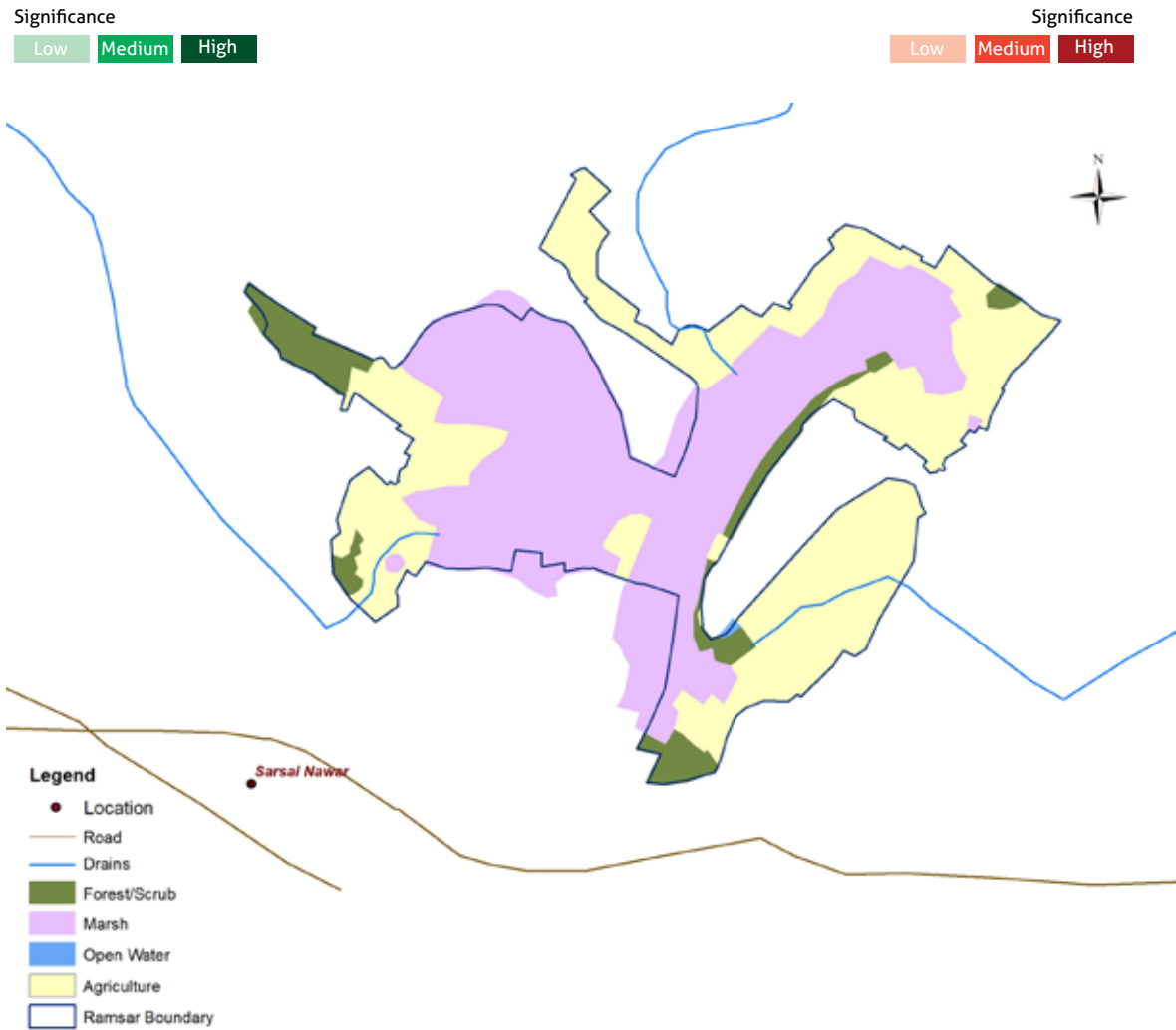
### Management Authority

Uttar Pradesh State Wetland Authority







Values and Benefits

-  Water for irrigation
-  Recharges groundwater
-  Lifecycle maintenance of fish and water birds
-  Scientific and educational value
-  Hajari mahadev temple is revered in the region



Threats

-  Hydrological regime alteration
-  Encroachment
-  Intensive agriculture
-  Invasive species

Species richness

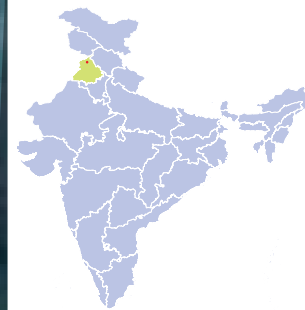
250 Birds  
46 Fishes  
246 Plants

Species of global conservation significance

Notable	Critically endangered	Endangered	Vulnerable
Sarus crane	White-rumped Vulture	Palla's Fish Eagle	Greater Spotted Eagle, Sarus crane, Woolly necked stork

# Beas Conservation Reserve

## Punjab



Gitanjali Kanwar

### Date of Designation

September 26, 2019

### Location

Hoshiarpur, Amritsar, Gurdaspur, Kapurthala, Jalandhar and Tarn Taran Districts

### Area

6428.9 hectares

### Designation Criteria

2,7

### Protection Status

Conservation Reserve

### Wetland Type

River stretch

### Management Authority

Department of Forest and Wildlife Preservation, Punjab



## Values and Benefits



Source of freshwater



Maintenance of hydrological regime



Nutrient and sediment retention



Lifecycle maintenance  
Hosts the only population of the Indus River Dolphin in India



Scientific and educational importance



Cultural and Spiritual values

Significance

Low

Medium

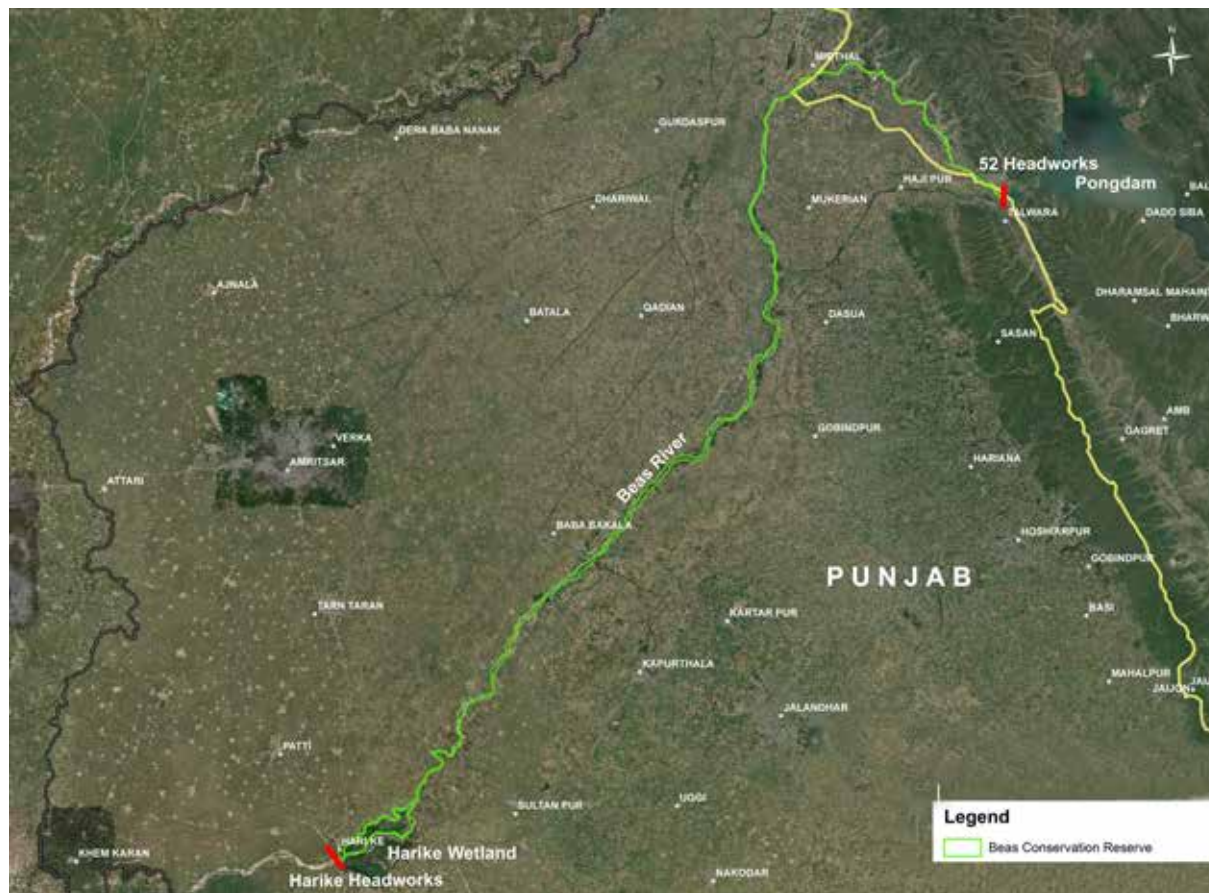
High

Significance

Low

Medium

High



## Threats



Alteration in hydrological regimes



Pollution due to domestic and industrial effluents



Encroachment



Over grazing



Water abstraction



Invasive species

## Species richness

~500 Birds

90 Fishes

7 Turtles

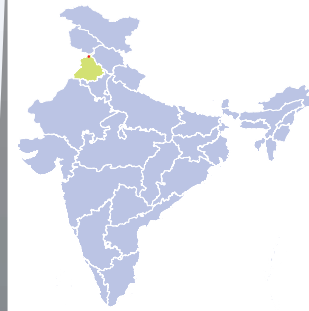
20+ Plants

## Species of global conservation significance

Notable	Critically endangered	Endangered	Vulnerable
Indus river Dolphin, Gharial	Gharial	Indus river Dolphin, Spotted Pond Turtle, Hog Deer, Mahseer, Pabdash Catfish	Common Pochard, Woolly-necked Stork, Crowned River Turtle, Smooth Coated Otter, Indian Softshell Turtle, Common Carp, Wallago Catfish

# Keshopur-Miani Community Reserve

Punjab



Citranjali Kanwar

## Date of Designation

September 26, 2019

## Location

Gurdaspur District

## Area

343.9 hectares

## Designation Criteria

2,5

## Protection Status

Community Reserve

## Wetland Type

Marshes and aquaculture ponds

## Management Authority

Department of Forest and Wildlife  
Preservation, Punjab



## Values and Benefits



Supports Agro-ecology: Rice, Water chestnut and other crops along with Fisheries



Fodder



Buffers flood



Recharge groundwater



Lifecycle maintenance of migratory species



Scientific and educational importance



Tourism and recreation

Significance

Low

Medium

High



Significance

Low

Medium

High

## Threats



Drainage



Pollution due to agricultural runoff



Invasive and alien species

## Species richness

131 Birds

27 Fishes

16 Mammals

21 Amphibians & Reptiles

130 Plants

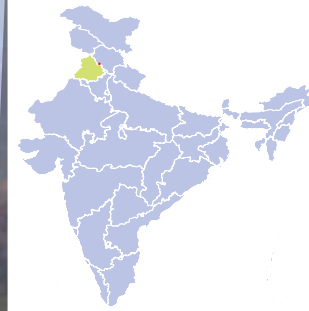
## Species of global conservation significance

Notable	Critically endangered	Endangered	Vulnerable
Common Crane, Sarus Crane		Spotted Pond Turtle, Black-bellied Tern	Common Pochard, Woolly-necked Stork, Sarus Crane, Greater spotted Eagle, Indian Softshell Turtle, Common Carp



# Nangal Wildlife Sanctuary

## Punjab



Wetlands International South Asia Photo Library

### Date of Designation

September 26 2019

### Location

Rupnagar District

### Area

116 hectares

### Designation Criteria

2,3

### Protection Status

Wildlife Sanctuary

### Wetland Type

Reservoir

### Management Authority

Department of Forest and Wildlife  
Preservation, Punjab



Values and Benefits



Source of freshwater



Buffers flood



Sediment and nutrient retention



Groundwater recharge.



Lifecycle maintenance of migratory birds

Significance

Low Medium High

Significance

Low Medium High



Threats



Pollution  
(Sewage inflow and  
garbage dumping)



Tourism pressure

Species richness

154 Birds

35 Fishes

9 Mammals

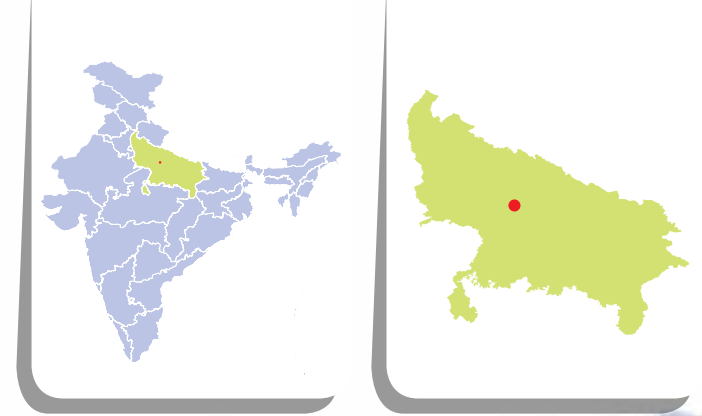
Species of global conservation significance

Notable	Critically endangered	Endangered	Vulnerable
		Pallas’s Fish Eagle, Egyptian Vulture, Black-bellied Tern, Hog Deer, Indian Pangolin, Golden Mahseer	Common Pochard, Leopard, Wallago Catfish, Burmese Python



# Sandi Bird Sanctuary

Uttar Pradesh



Uttar Pradesh State Wetlands Authority

## Date of Designation

September 26, 2019

## Location

Hardoi District

## Area

308.5 hectares

## Designation Criteria

2,3,4,5,6,7

## Protection Status

Bird Sanctuary

## Wetland Type







Freshwater marsh

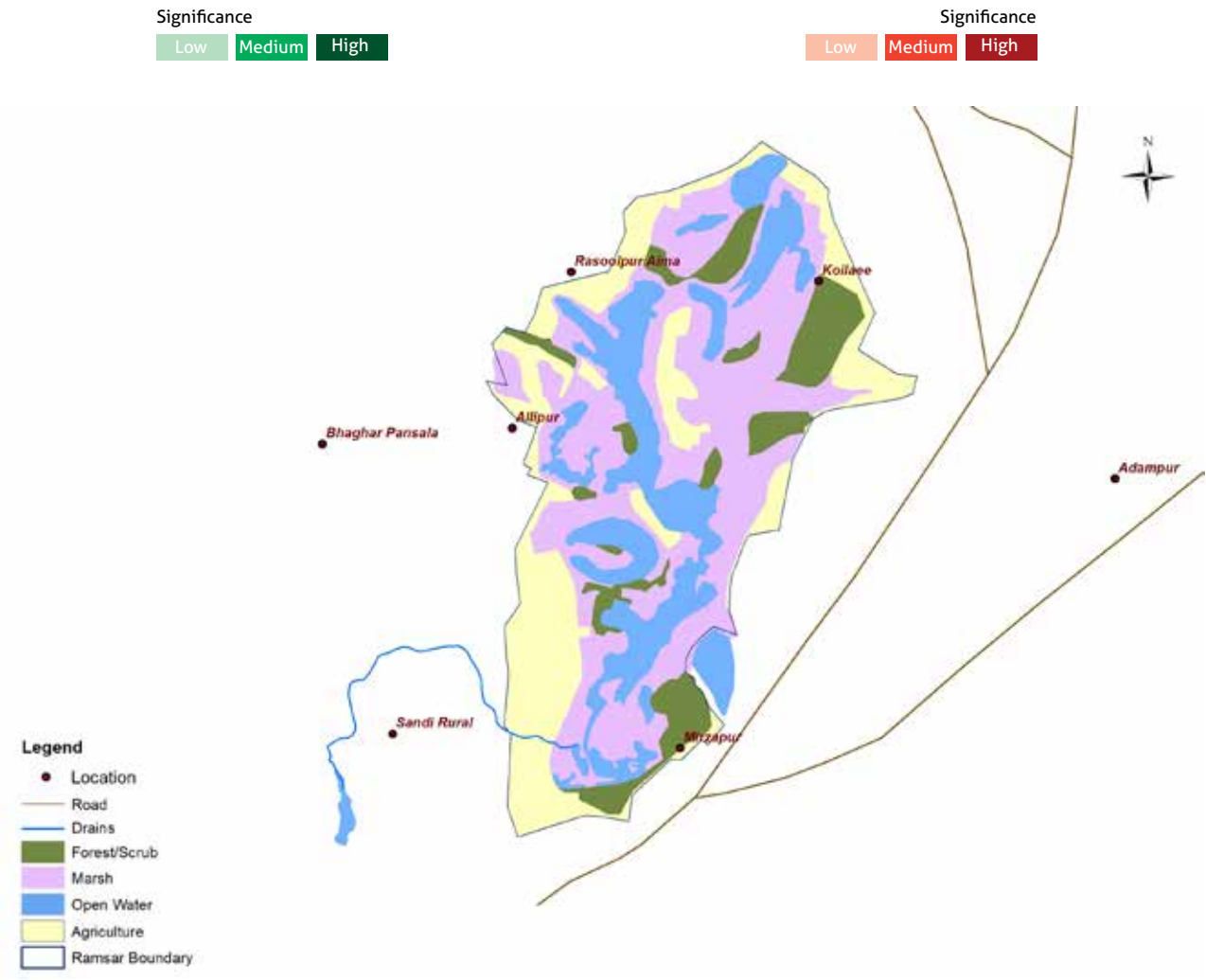
## Management Authority

Uttar Pradesh State Wetland Authority



Values and Benefits

-  Water for agriculture
-  Fisheries for livestock
-  Recharges groundwater
-  Buffers floods
-  Maintenance of lifecycles of migratory birds
-  Tourism and recreation



Threats

-  Pollution
-  Encroachment
-  Over grazing
-  Water abstraction for agriculture
-  Invasive species

Species richness

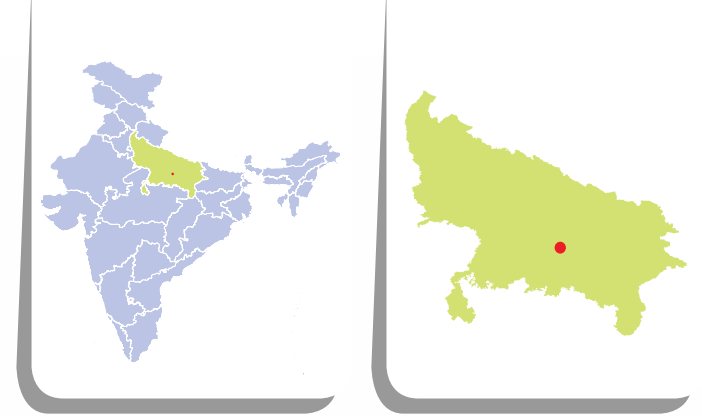
- 150 Birds
- 13 Fishes
- 19 Mammals
- 18 Reptiles & Amphibians
- 209 Plants

Species of global conservation significance

Notable	Critically endangered	Endangered	Vulnerable
Sarus Crane			Greater Spotted Eagle, Sarus Crane

# Samaspur Bird Sanctuary

Uttar Pradesh



Uttar Pradesh State Wetlands Authority



## Date of Designation

October 3, 2019

## Location

Raebareli District

## Area

799.4 hectares

## Designation Criteria

2,3,4,5,6,7

## Protection Status

Bird Sanctuary

## Wetland Type

Freshwater marsh

## Management Authority

Uttar Pradesh State Wetland Authority



# Values and Benefits

- 

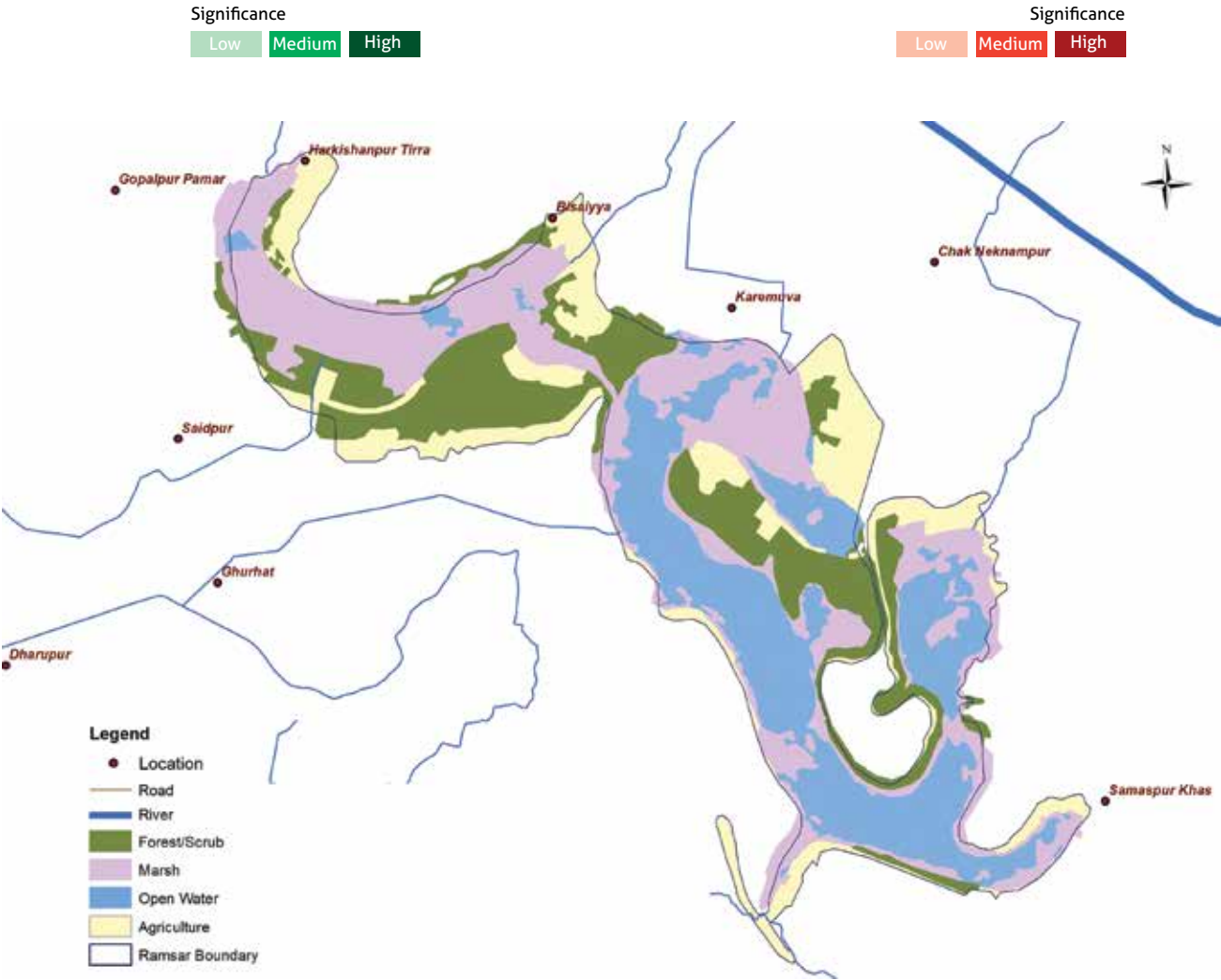
Water for agriculture
- 

Fisheries
- 

Fodder
- 

Buffer for floods
- 

Groundwater recharge




# Threats

- 

Drainage
- 

Siltation
- 

Pollution
- 

Over grazing
- 

Intensive agriculture
- 

Invasive species

## Species richness

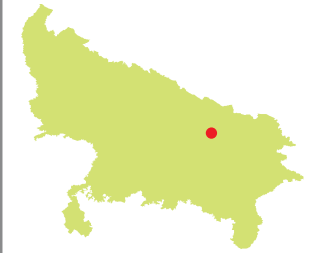
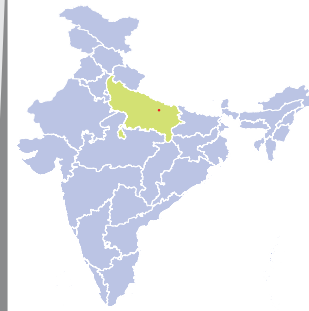
250 Birds  
46 Fishes  
149 Plants

## Species of global conservation significance

Notable	Critically endangered	Endangered	Vulnerable
Sarus Crane		Pallas’s Fish Eagle	Greater Spotted Eagle, Common Pochard, Sarus crane

# Parvati Arga Bird Sanctuary

## Uttar Pradesh



Uttar Pradesh State Wetlands Authority

### Date of Designation

December 2, 2019

### Location

Gonda District

### Area

722 hectares

### Designation Criteria

2,3,4,5,8

### Protection Status

Bird Sanctuary

### Wetland Type

Freshwater marshes

### Management Authority

Uttar Pradesh State Wetland Authority



Values and Benefits



Water for agriculture



Groundwater recharge



Buffers flood



Maintenance of lifecycles of migratory birds and fish



Scientific and educational values



Cultural and spiritual importance

Significance

Low

Medium

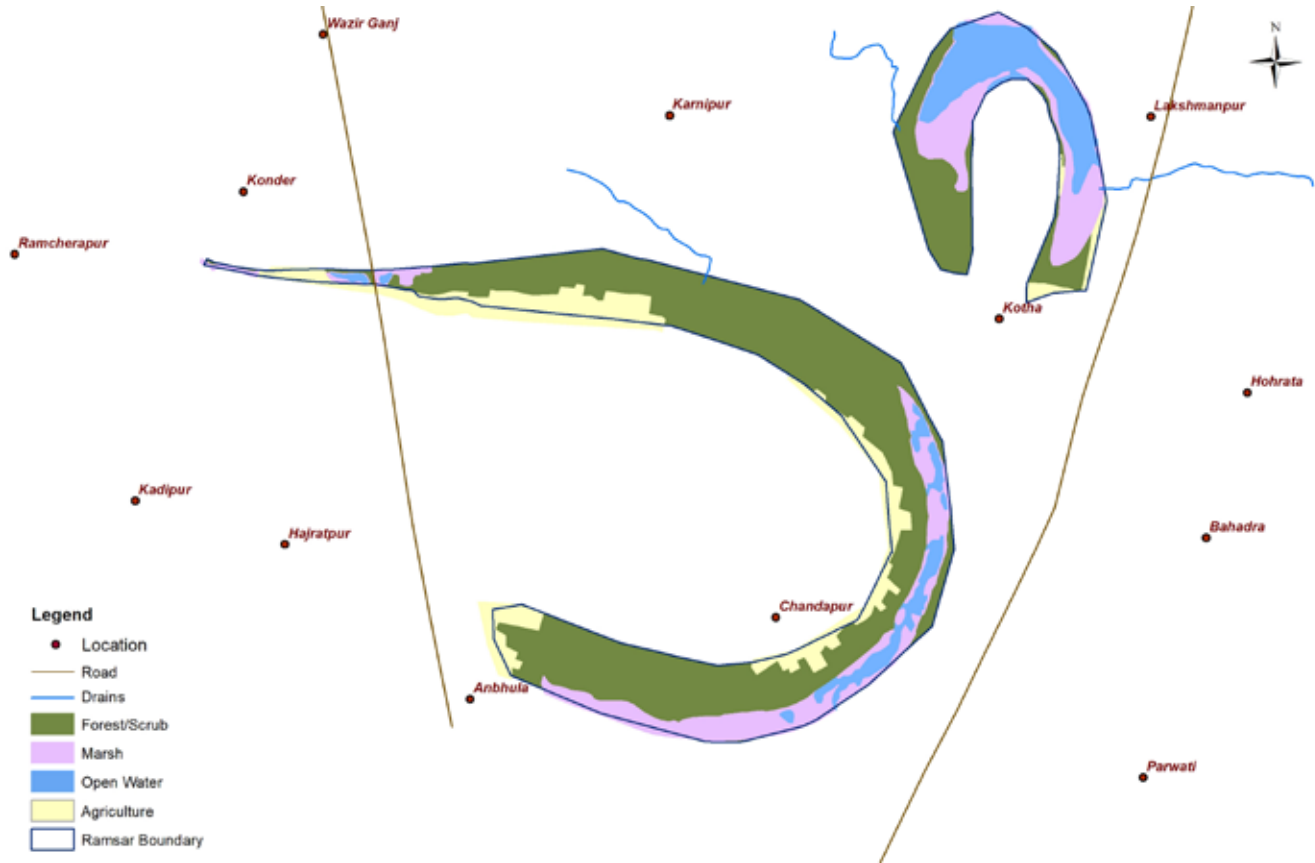
High

Significance

Low

Medium

High



Threats



Pollution from agricultural run-off



Regime fragmentation through roads



Invasive species,



Tourism pressure

Species richness

37 Birds

18 Mammals

2 Reptiles & Amphibians

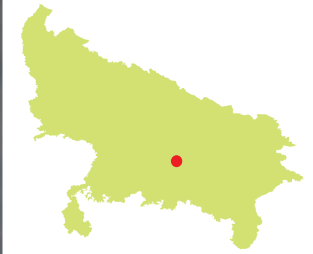
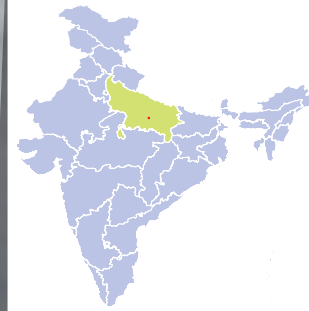
37 Plants

Species of global conservation significance

Notable	Critically endangered	Endangered	Vulnerable
Sarus Crane	White-rumped Vulture, Indian Vulture	Egyptian Vulture	Greater Spotted Eagle, Common Pochard, Woolly-necked stork, Sarus Crane

# Saman Bird Sanctuary

Uttar Pradesh



Uttar Pradesh State Wetlands Authority

## Date of Designation

December 2, 2019

## Location

Mainpuri District

## Area

526.3 hectares

## Designation Criteria

2,3,4,5,6

## Protection Status

Bird Sanctuary

## Wetland Type

Freshwater marsh

## Management Authority

Uttar Pradesh State Wetland Authority



Values and Benefits



Water for agriculture



Groundwater recharge



Habitat for migratory waterbirds



Recreation and tourism

Significance

Low

Medium

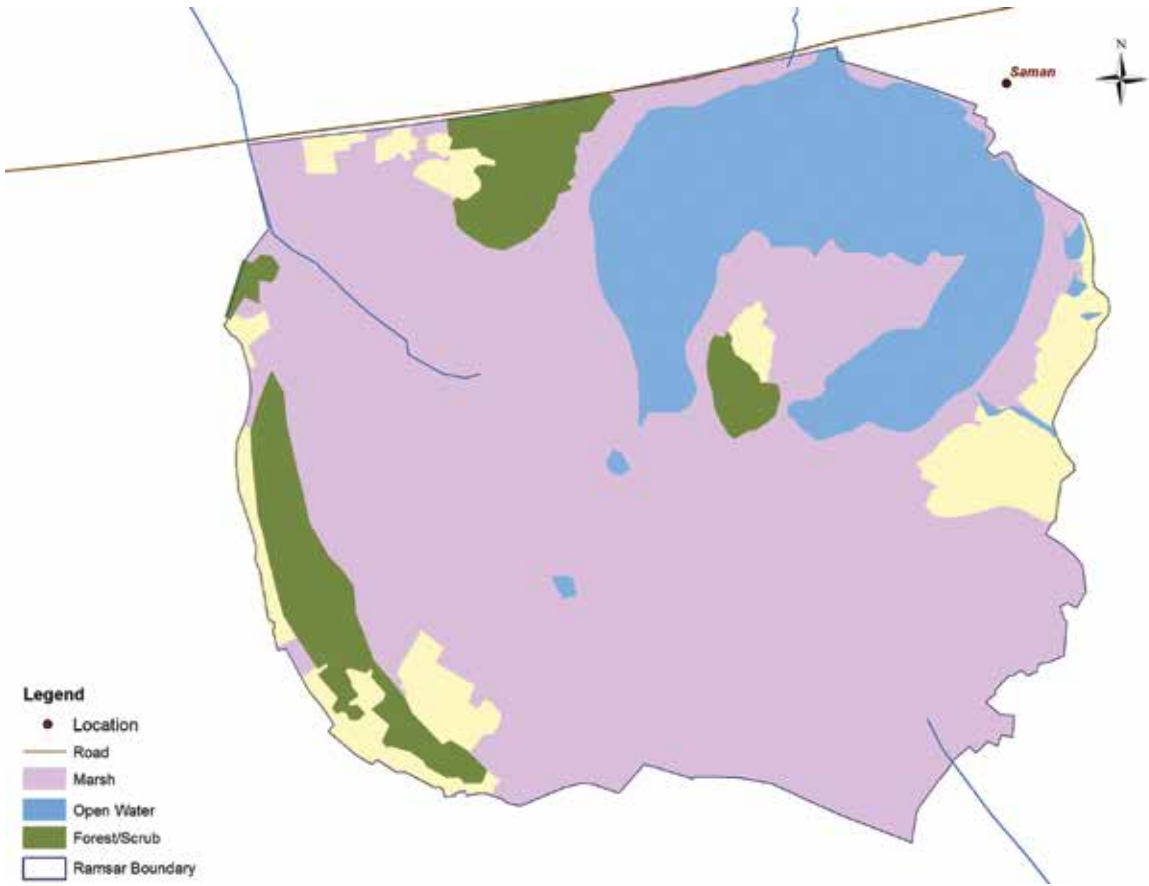
High

Significance

Low

Medium

High



Threats



Pollution



Encroachment



Over grazing and feral dogs



Intensive agriculture



Invasive species

Species richness

187 Birds

11 Mammals

154 Plants

Species of global conservation significance

Notable	Critically endangered	Endangered	Vulnerable
Sarus Crane		Palla's Fish Eagle, Egyptian Vulture	Greater Spotted Eagle, Sarus crane

# Compilation team

“

## Overall direction

Mr Ravi Agrawal, Additional Secretary, MoEFCC  
Ms Manju Pandey, Joint Secretary, MoEFCC

”

“

## Wetlands Division, MoEFCC

Ms Rita Khanna, Director  
Mr Chandan Singh, Joint Director

”

“

## WWF-India

Mr Suresh Babu  
Dr Amit Dubey  
Ms Gitanjali Kanwar  
Mr Yaiphaba Meetei Akoijam  
Dr Abhishek Bhatnagar  
Mr Sanjeev Yadav  
Mohd Shahnawaz Khan  
Ms Shoma Stanley  
Dr G Areendran  
Dr Krishna Raj

”

“

## Wetlands International South Asia

Mr Harsh Ganapathi  
Mr Dhruv Verma  
Mr Kamal Dalakoti  
Ms Nehha Sharma  
Dr Ritesh Kumar

”

“

## GIZ-India

Mr Kunal Bharat  
Mr Debojyoti Mukherjee  
Dr Avantika Bhaskar  
Ms Neha Owaisy  
Mr Ravindra Singh  
Ms Shambhavi Krishna

”









of the Federal Republic of Germany